



PASSIVE HOUSE  
NORTHFIELD MASSACHUSETTS  
GRAPHITE STUDIO



AIA Massachusetts is your state AIA component. Incorporated in 1941, AIA Massachusetts is managed by a 9-member Board of Directors - three members from each of the three local components: the BSA, Central MA and Western MA. Its mission is to serve its members, advance their value, and improve the quality of the built environment and the practice of architecture in Massachusetts through legislative and governmental action. We promote architects and architecture through political activism, legislative activities and grassroots efforts and we guard the interests of architects regarding regulations and law. Here's some of what we're working on now:

**Legislation Tracked by AIA MA**

As of September 2024, AIA MA is tracking 162 bills for the 2023-2024 legislative session, with 22 high-priority, 51 medium-priority, and 68 low-priority bills. There has been limited movement on these bills due to the end of the formal legislative session on July 31, though action can still occur during informal sessions before the new session begins in January 2025.

Although no high-priority bills have advanced into law, some medium and low-priority bills have progressed. HB 3012 (Project Labor Agreements) was substituted with a new draft, indicating ongoing revisions. Other bills, such as HB 2386 (Fire Protection Systems) and HB 3110 (Modernizing Participation in Public Meetings), have been referred for further study or extended for more debate. High-priority bills on issues like embodied carbon in state climate policy and gender-neutral bathrooms remain in committee or conference without further movement.

AIA MA continues to monitor these bills, with several facing potential re-filing in the next legislative session. Ongoing negotiations and Informal sessions will determine the final outcomes for these and other pending legislation.

To view the current status of all AIA MA tracked legislation, visit [aiama.org](http://aiama.org) and review the files located under the banner Bills Tracked for the 2023-2024 Legislative Session.

**Regulation Tracked by AIA MA**

The Department of Energy Resources (DOER) announced a public review of revisions to the Stretch Energy Code (Stretch Code) and the new Municipal Opt-in Specialized Code (Specialized Code), which were originally promulgated in December 2022 as 225 CMR 22.00 and 225 CMR 23.00. After a year and a half of implementation, DOER received substantial feedback from regulated entities, building officials, and industry stakeholders. In response, DOER is proposing modest revisions to these codes with a virtual public hearing that took place on September 16, 2024, and written comments that were accepted through September 17, 2024.

On September 25, 2024, Sarah Wilkerson, Commissioner of the Division of Occupational Licensure, informed AIA Massachusetts that the 10th edition of the 780 CMR Base Building Code (Massachusetts Amendments) will be officially promulgated on October 11, 2024. A concurrency period with the 9th edition will extend until January 1, 2025. However, the Board of Building Regulations and Standards (BBRS) will discuss extending this period at their October 8 meeting due to delays in promulgating the code. Once finalized, AIA Massachusetts will notify members, and inquiries can be directed to Chris Rogers, Executive Director of Public Safety Boards.

If you are interested in becoming involved in AIA Massachusetts, please contact AIA MA Executive Director John Nunnari at [jnunnari@architects.org](mailto:jnunnari@architects.org)

John Nunnari is the Executive Director of AIA Massachusetts

WESTERN MASSACHUSETTS FELLOWS

In May 2024, Western Massachusetts Fellows of the AIA, ASLA, and AICP gathered in the Umass Design Building for dinner and discussion, and to honor our newest fellows, seated lower right in photo—Tom RC Hartman FAIA and Ludmilla Pavlova-Gillham FAIA.

The gathering was organized by Steve Schreiber FAIA.



IN THIS ISSUE:

- ONE AIA MASSACHUSETTS / WESTERN MASSACHUSETTS FELLOWS
- TWO COVER STORY: GRAPHITE STUDIO
- THREE + FOUR UMASS DesignBuild PROGRAM 2024
- SIX CITIZEN ARCHITECT: NAOMI DARLING AIA + HELEN FANTINI AIA
- SEVEN NCARB UPDATE
- EIGHT UMassBRUT: WINDOWS ON UMASS
- NINE + TEN THINGS TO DO + SEE IN WESTERN MASSACHUSETTS
- ELEVEN + TWELVE FEATURED ARTISAN: HT WOODSHOP
- FIFTEEN WMAIA PROGRAMS: FALL 2024

THE WESTERN MASSACHUSETTS CHAPTER OF THE AMERICAN INSTITUTE OF ARCHITECTS

THE WMAIA NEWSLETTER IS PUBLISHED FOUR TIMES A YEAR. IT IS CIRCULATED TO ALL MEMBERS, ADVERTISERS AND SUBSCRIBERS. PLEASE DIRECT ALL NEWSLETTER CORRESPONDENCE TO RACHAEL CHASE, AT [EDITOR@WMAIA.ORG](mailto:EDITOR@WMAIA.ORG). ARTICLES, PHOTOS, NOTICES OF EVENTS AND OTHER INFORMATION ARE WELCOME. OPINIONS EXPRESSED IN THE NEWSLETTER ARE NOT NECESSARILY THOSE OF THE WMAIA. THE EDITOR RESERVES THE RIGHT TO REJECT OR REVISE MATERIAL AS SPACE AND SUBJECTIVE OPINION PERMIT.

COVER PHOTOS: JEN CYPRESS

COVER STORY GRAPHITE STUDIO



In the summer of 2019, new owners turned to Graphite Studio to transform a foreclosed structure into what they now call Mountain Park.

Our integrated design team - including Mathes Hulme Builders, Power House Energy Consulting, and PV Squared - worked to create a cozy, serene, minimalist all-electric Passive home with three bedrooms, a full basement, and strong connections to the neighborhood.

This home included a robust foam-free enclosure - 12" double stud walls, triple-glazed windows, a truss roof, and a full basement insulated with Rockwool and Glavel, the Vermont-made recycled glass product that acts as drainage and insulation below the slab. The mechanical system includes a heat pump hot water system and our second install of a Minotair, the all-in-one Canadian-made hybrid ERV and heat pump. PHIUS (Passive House Institute of the US) certified the design in late winter of 2023.

As Mountain Park gets ready for its second occupied winter, with the frost decidedly kept OUTSIDE, we look forward to further reports on its cozy, welcoming performance.



DO YOU HAVE A COVER STORY?  
EMAIL [EDITOR@WMAIA.ORG](mailto:EDITOR@WMAIA.ORG)

WMAIA EXECUTIVE COMMITTEE

PRESIDENT:

KERRY BARTINI AIA

PRESIDENT ELECT:

GARRISON PIERS-GAMBLE ASSOCIATE AIA

TREASURER:

JODY BARKER AIA

SECRETARY:

CARYN BRAUSE FAIA

PAST PRESIDENT:

GARTH SCHWELLENBACH AIA

MEMBERS:

WENDY BROWN AIA

HELEN FANTINI AIA

MOHAMED IBRAHIM AIA

HECTOR MARTINEZ AIAS

SHELBY PARRISH ASSOC. AIA

STEPHEN SCHREIBER FAIA

KRISTIAN WHITSETT AIA

EXECUTIVE DIRECTOR:

LORIN STARR

NEWSLETTER EDITOR:

RACHAEL CHASE

EMERGING PROFESSIONALS

COORDINATOR

GARRISON PIERS-GAMBLE ASSOCIATE AIA

ARCHITECT LICENSING ADVISOR

KERRY BARTINI AIA

WEBSITE MANAGER

JULIE WAGGONER HON. WMAIA

SOCIAL MEDIA

LEAHNA AGUSTIN AIAS

FILM SERIES

ANDREW BAGGE AIA

DISASTER ASSISTANCE COORDINATOR

LUDMILLA PAVLOVA-GILLHAM FAIA

COTE COMMITTEE CHAIR

JILLIAN DECOURSEY AIA



# 2024 UMASS DesignBuild : THE 8TH SISTER

## ROB WILLIAMS AIA

UMass DesignBuild (UMDB) is interdisciplinary collaboration between the UMass Department of Architecture, the UMass Building and Construction Technology Program, and the Five College Architectural Studies Program, where teams of students work together to design and build small houses for community partners in Western Mass. Students gain hands-on experience with the design and construction of high-performance, low-carbon buildings while directly addressing the affordable housing crisis in our region.

There are many university-based design-build programs throughout the country, but UMDB's emphasis on high-performance, low-carbon design and its model for true interdisciplinary collaboration between the allied disciplines of architecture and construction is unique. Students spend the spring semester designing the project in an advanced design studio. For most of the BCT students, this is their first experience taking a design studio. Students then devote eight weeks during the summer to build the project at the DOC Build Site on the UMass Campus. For most of the architecture students, this is their first experience on a construction site. For all students, it is their first time getting into the construction details of high-performance building. By working together, these students develop an appreciation and understanding of their respective fields which prepares them for future professional leadership.

The 2024 project – named the “8th Sister” in reference to the Holyoke Range – is the third house that UMDB has built since the program was founded in 2020. For all three projects, UMDB has partnered with OneHolyoke CDC, an affordable housing provider in Holyoke, MA. A critical challenge for design and construction is the need for off-site construction and transportability. The houses are built in Amherst on the UMass campus build site and then moved to Holyoke via flatbed truck. In particular, the houses must adhere to the strict dimensional regulations for highway transportation. Following on the heels of the 2023 project, which cleverly disassembled into four parts for transportation, the 2024 team decided to explore the opportunities (and limitations) of designing and building a single volume that could be transported in one piece. The 8th Sister is organized around a central kitchen and living space and book-ended by a bedroom on one side and a bathroom and entry space on the other. Since the students were limited to a 16x40 footprint, all the spaces within the home are carefully considered. On the exterior, porches extend the living space beyond the envelope and a slight pitch on the roof disrupts the otherwise tight volume of the house.

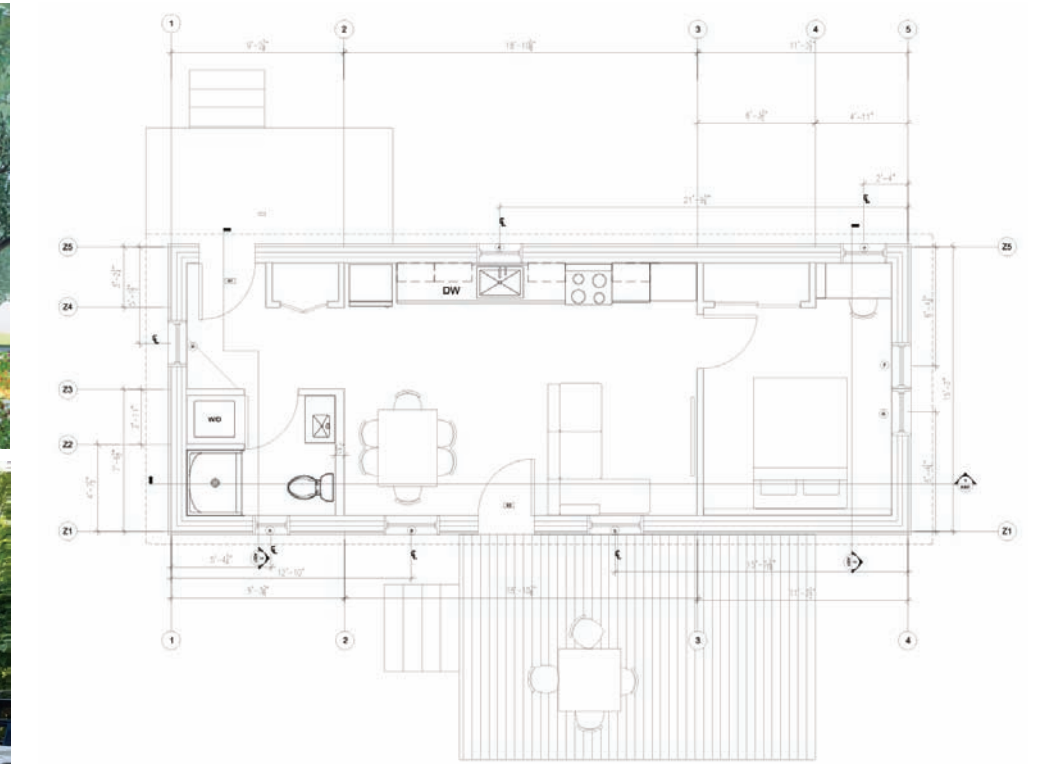
Across each iteration of UMDB projects, the teams continue to experiment and test low-carbon and largely bio-based building assemblies. The first house included a mix of wood fiberboard exterior insulation and dense-packed cellulose. The second house paired repurposed polyiso insulation on the exterior with hemp fiber batt and dense-pack cellulose within the stud bays. In 2024, the 8th Sister employs a 10” wide double-stud wall system with 10” of TimberHP wood fiber batt insulation. It also features a small portion of compressed straw bale wall panels with a clay-plaster finish. With the goal of continually reducing material carbon emissions (aka cradle-to-gate emissions) in addition to the operational emissions, the 2024 project also relies on a concrete pier foundation system in place of a full concrete basement or crawlspace. Carbon modeling indicates that the inclusion of wood fiber insulation throughout, along with the reduction in concrete, leads to dramatic reductions in the total embodied carbon.

At the time of writing, the 8th Sister remains located on the UMass build site while the sitework and foundations are completed. The team is optimistic that the project will be moved to Holyoke this fall, and will be ready to become part of Holyoke's affordable housing offerings in the spring.



# 2024 UMASS DesignBuild : THE 8TH SISTER

## ROB WILLIAMS AIA



The UMass DesignBuild program is funded through the generous support of many individual and corporate donors. Special thanks to OneHolyoke CDC, DOC Construction, D.A. Sullivan Construction, RK Miles Building Materials, Cows Building Supply, Pella Windows and Doors, Rothoblaas, TimberHP, and UFP Construction.

For more information about the project, please visit the UMDB blog: <https://websites.umass.edu/umassdesbuild>



A WHOLE NEW APPROACH TO ENGINEERING DESIGN

LN Consulting provides building design solutions focused on health and sustainability, forged in analysis and technology, in collaboration with our clients and the communities they serve. Our consulting firm delivers intelligent, forward-thinking solutions that address building resiliency, energy optimization, and occupants' safety.



(413) 776-9580  
 Northampton, MA

(802) 655-1753  
 Burlington, Vermont

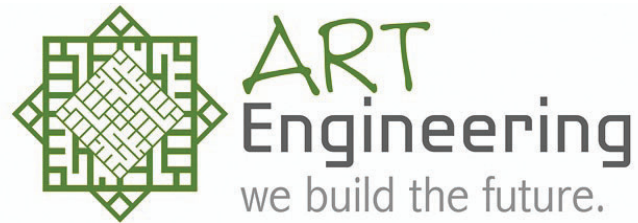
[LNconsulting.com](http://LNconsulting.com)

**WB WESTERN BUILDERS**  
 GRANBY, MA est. 1975

**BUSINESS SERVICES**

- Preconstruction
- General Contracting
- Construction Management

413-467-9171 x3071  
 73 Pleasant St. Granby MA  
[www.westernbuilders.com](http://www.westernbuilders.com)



38 Front Street FL 3 Worcester, MA 01608  
 t. 508-797-0333 f. 508-797-5130

**mica blue**  
 CREATIVE

Julie Waggoner  
 Affiliate WMAIA  
[jwaggoner@micablue.com](mailto:jwaggoner@micablue.com)  
 413-665-2280

Graphic Design  
 Web Design  
 Copy Writing  
 Photography



Make space for original thinking.

You listen. You imagine. Then, you lead the way to bring it all to life. At Marvin, we understand what comes with "custom." That's why you'll find more than high-quality windows and doors with us. You'll meet seasoned experts with unwavering ingenuity to help you make space for what matters—discerning details, uncompromising quality, and creating more one-of-a-kind designs.

[marvin.com/architectural-resources](http://marvin.com/architectural-resources)



©2023 Marvin Lumber and Cedar Co., LLC.

Where do you both live?

South Hadley Massachusetts

In what way are you serving your community?

We served on the South Hadley Housing Production Plan Advisory Committee, a group that helped guide the development of this Massachusetts-required plan to address the lack of affordable housing in our community. Massachusetts requires that every municipality have 10% Affordable Housing (with capital letters) which is typically deed restricted housing that is only available to income-eligible households and can cost no more than 30% of the resident's household income. If a municipality does not meet this threshold (and many do not), a town is vulnerable to Chapter 40B development, which allows developers offering to increase the affordable housing stock nearly free rein with respect to adhering to local zoning laws or any design or site plan review criteria. Developing a Housing Production Plan – a roadmap for how our town can come into compliance with the state requirement, places us in "safe harbor" so that developers would need to go through a typical review process. As part of the Housing Production Plan advisory board, we participated in regular meetings over the course of a year, as well as in two community forums. We learned some surprising facts – for example that 40% of households in South Hadley would qualify as low-income (making 80% of Area Median Income or \$52,750 for a single person) and 30% of households in South Hadley pay more than they are able to afford. This housing production plan, adopted in late 2023, will guide housing development in South Hadley for the next 5 years.

How has your design training prepared you for being active in your community?

Naomi: I think where our training as architects was most helpful was when we were discussing the various potential solutions for increasing affordable housing in town. We were presented with various sites and being able to think about the sites in the greater spatial context of the town such as transportation, access, ecology, etc helped in providing input.

Helen: Without question, the ability to visualize potential options on sites across town was helpful. That, and having practice understanding zoning bylaws.

What are your takeaways and/or advice regarding public service?

Naomi: I learned so much about housing in South Hadley that was really interesting. Our town has some distinct neighborhoods and the public forums, in particular, were a place where I could hear what others in town think about our housing. It takes time and the meetings were often in the evenings which makes it difficult for parents of young children to participate, but in the end I felt it was worthwhile and our training in design meant that we have some expertise that we can share with our community.

Helen: I really enjoyed being on the 'reviewer' side of the professional services relationship. We had a very knowledgeable consultant (Outwith Studio in association with Utile) who provided expert guidance through what were some sticky community meetings. And, it's a great way to truly understand what your neighbors care about.



NAOMI DARLING AIA



HELEN FANTINI AIA

ARE YOU A CITIZEN ARCHITECT? WE'D LOVE TO HEAR WHAT YOU'RE DOING!  
 EMAIL [EDITOR@WMAIA.ORG](mailto:EDITOR@WMAIA.ORG)



# NCARB UPDATE

## KERRY BARTINI AIA

What are the top knowledge, skills and abilities needed for an entry level position in architecture?  
 Visit [ncarb.org](http://ncarb.org) for NCARB's Workforce Readiness Report culled from thousands of licensed architects and architecture professionals.  
 Also newly released is the new Competency Standard for Architects which, according to NCARB's website, "establishes sixteen knowledge areas, skills, abilities, and behaviors—called competencies—that describe the capabilities necessary at the point of initial licensure for an individual to protect the public's health, safety, and welfare."  
 Looking to change your jurisdiction while testing for the ARE?  
 Candidates can now do so through their My NCARB login, streamlining the process.  
 Curious about the state of licensure?  
 Check out NCARB's newly released 2024 NCARB By the Numbers, as well as the Baseline on Belonging and Building on Belonging in conjunction with NOMA.  
 Compelling information on our profession.  
 Kerry Bartini AIA is the Massachusetts Licensing Advisor to NCARB





## Build your legacy with Keiter

Our passion is to help our clients build the integral foundations of their legacy.

▶ LEARN MORE AT KEITER.COM




# UMassBRUT: WINDOWS ON UMASS

## LUDMILLA PAVLOVA-GILLHAM FAIA

**UMassBRUT** - a multidisciplinary campaign designed to reshape perceptions of the Brutalist architecture of the University of Massachusetts system – presents a fall exhibition **Windows on UMass** from October 7th to December 10th at the John Olver Design Building Gallery, with a symposium and receptions on October 25th at 12:30pm and on November 8th at 11:30am. The Gallery is free and open to the public Monday through Friday 8:30am to 4:30pm, at 551 North Pleasant Street, Amherst MA 01003.

Windows provide light and air in functional ways but are also subjective. Looking through a window projects our viewpoint, but also engages us with the world beyond. The **Windows on UMass** exhibit shows how students see the windows of the historic Brutalist buildings of the UMass campuses from multiple viewpoints, and the associated symposium and lecture present new efforts to care for, modernize and adapt Brutalist buildings for contemporary use.

A pedagogical experiment, **Windows on UMass** began as a classroom assignment devised by Professor Timothy M. Rohan for classes in the Department of the History of Art & Architecture at UMass Amherst, which was then shared with other Amherst departments and UMass Dartmouth. Students from Studio Art, Architecture, and Interior Design analyzed the remarkably diverse windows of buildings such as the Bromery Fine Arts Center at UMass Amherst by Kevin Roche and John Dinkeloo and Paul Rudolph's LARTS Building at UMass Dartmouth. Usually, these buildings are understood as signature works by mid-twentieth century, master architects, but showing how they are perceived and understood by students reveals them in new ways, thus demonstrating that the engagement of today's users matters as much as that of the original maker.

A two-day Symposium offers discussions between faculty, students, and practitioners on how caring for our campus heritage includes a spectrum of activities - teaching, research and scholarship that engages with campus buildings, thoughtful and innovative design and renovation strategies for adapting Brutalist facilities, and tours and exhibits that guide public appreciation of the functional and aesthetic qualities of our built environment. On **Friday, October 25th** from 12:30 – 5:30pm the Symposium on Teaching and Learning with Our Campus Modernist Architecture will include student presentations, as well as faculty presentations on Researching and Mounting an Exhibition of Campus Buildings by Clark University Prof. Kristina Wilson and on UMass Dartmouth: Working with Students in the Archive to Research Campus Buildings by Prof. Anna Dempsey and Allison Cywin. Rebecca L. Berry, AIA, LEED AP - Principal, Finegold Alexander Architects and Carla Ceruzzi, AIA, LEED AP BD+C - Associate Principal, Sasaki will present lessons learned from their **UMass Dartmouth LARTS Building Renovation Project**. And these presentations will be followed by a Docomomo Windows on UMass Campus Walking Tour and an **Architectural Tour of W.E.B. Du Bois Library 6th and 7th Floor Renovations** by Liv Wyatt, Designer/Construction Administrator, and Kuhn Riddle Architects & Designers. On Friday, November 8th from 11:30 – 1pm there will be a presentation on the Science of Bird-Window Collisions and the Need to Protect Birds from the Human Built Environment by Daniel Klem, Jr. Sarkis Acopian Professor of Ornithology and Conservation Biology, Muhlenberg College.

**Please visit [www.UMassBRUT.org](http://www.UMassBRUT.org) for additional information**

Ludmilla Pavlova-Gillham FAIA, LEED AP BD&C is a senior Senior Campus Planner and Architect at UMass Amherst



Photo of student work at the UMass Design Building UMass Amherst

Select Windows On UMass Programs are being offered with AIA Learning Units - See back cover for more information!



# THINGS TO DO + SEE IN WESTERN MASSACHUSETTS

## MASS MoCA

### CHRISTINA KUBISCH: CLOCKTOWER PROJECT

The comparison of a city's clock to a person's heart, though it has been made countless times, remains evocative. When Christina Kubisch first visited MASS MoCA in 1996, she was moved by the fact that the century-old factory clock had not kept time, nor had its bells rung, since 1986, when the Sprague Electric Company vacated the 13-acre site. This 19th-century clock, inside an eighty-foot tower with a 750-pound and a 1,000-pound bell, had set the rhythm of the workday in North Adams since 1895, ringing every quarter hour. Now those bells and beautiful brass clockworks share the tower with components of The Clocktower Project: solar panels, electronic sound system, and a computer with Kubisch's unique program on its flash disc.

### DON GUMMER: PRIMARY SEPARATION

The sculpture consists of a massive granite boulder, 12 feet long by 6 feet tall, sawed in half. The stone halves—separated by an 11-inch gap—are suspended 10 feet above ground, within a system of stainless steel supports and cables. Gummer's original inspiration for Separation was a stone that reminded him of Brancusi's sculpture, Fish. In using the stone, Gummer had Duchamp's ready-mades in mind, but substituting for Duchamp's man-made objects an object found in nature.

### ALLOVERS

Musician and sound artist Ryan Olson teams with producer and sound artist Seth Rosetter to convert the stairs and basement of MASS MoCA's Building 10 into a musical instrument. Allovers is "played" by stimuli from its surrounding environment, from snippets of conversation and footfalls, to the rattle of carts and deliberate acts of musical intervention. Visitors will encounter the installation as they enter the basement from the museum's lobby. Allovers provides back-line beats — overdubs, harmonic tones, and melodies — with musical motivation to the "band" provided by visitors. An analog knob and dial, on the panel mounted on the wall facing the windows, invites visitors to alter the compositional algorithm, shifting between an array of musical atmospheres, from ambient fuzz to hard-party modes.



### VICTORIA PALERMO: BUS STAND

The Bus Stand, designed by artist Victoria Palermo, is a public artwork and permanent addition to the North Adams community, adding to the movement to bring more public art to the city through the efforts of DownStreet Art.

# THINGS TO DO + SEE IN WESTERN MASSACHUSETTS



### WALL POWER!

MODERN FRENCH TAPESTRY FROM THE MOBILIER NATIONAL, PARIS  
DECEMBER 14, 2024–MARCH 9, 2025

Beginning in the 1930s, artists, government officials, art dealers, and entrepreneurs sought ways to modernize the ancient tradition of tapestry-making in France to reassert its role as an independent art form available to contemporary artists. Several decades of intense production and experimentation followed that brought international attention to a renewed tradition of French tapestry, as well as new opportunities for the historic manufactories of Gobelins and Beauvais, now overseen by the Mobilier national of France, and the private tapestry workshops in and around Aubusson. Drawn from the celebrated collection of the Mobilier national from the 1940s to present day, this exhibition explores tapestries by such artists as Joan Miró, Jean Lurçat, Henri Matisse, and Le Corbusier, who were central to the rapid resurgence of tapestry production; mid-century abstraction by artists including Sonia Delaunay and Victor Vasarely; and more recent productions including works by Gilles Aillaud and Kiki Smith.



Contemporary artist Thomas Schütte (German, b. 1954) is best known for his public large-scale sculptures of figures that reimagine the role of statuary and monuments. The artist's fascination with architecture as a kind of public sculpture that is both symbolic and practical complements his figurative practice and its exploration of the human form. Since the 1980s, Schütte has created a series of architectural models that conjure up spaces ranging from a tiny efficient home to a temple.

Crystal, Schütte's site-specific installation at the Clark, is the artist's first full-scale architectural artwork in the United States. It is located on a meadow near the top of Stone Hill, close to the woodland's edge.

Schütte arrived at the unusual asymmetrical shape of Crystal by imagining a small piece of crystal scaled up to architectural proportions. The interior is clad in wood and references the traditional materials of rural vernacular architecture; the outside is zinc-coated copper, a modern material that speaks to contemporary means and methods.



### DOUG FITCH: HUMAN/NATURE

Doug Fitch will present a sculpture exhibition in memory of Hillary Walton, a violinist, a scientist, and a literature professor. The exhibition will consist of once living trees and amazing samples of Walton's unique shoe collection and will reflect on nature and human interference with it. Fitch says "I am finding trees which have branched off in ways that make them resemble human legs. I am cutting them leg-length, then turning them upside-down, arboreal mannequin-style and setting them into Hillary's shoes. The result is a surprising juxtaposition. Trees don't wear shoes, so seeing them do so hopefully invites us to question how we think about ourselves as part of nature."



## Tighe&Bond

Creative MEP engineering solutions for Western Massachusetts architects.



Project: River Valley Co-Op  
Architect: Thomas Douglas Architects

[www.tighebond.com](http://www.tighebond.com)

# WRIGHT BUILDERS INC.

413.586.8287

[WRIGHT-BUILDERS.COM](http://WRIGHT-BUILDERS.COM)

48 BATES STREET  
NORTHAMPTON, MA 01060



CELEBRATING 50 YEARS AS WESTERN NEW ENGLAND'S  
LEADER IN SUSTAINABLE AND HIGH-PERFORMANCE  
RESIDENTIAL, COMMERCIAL & INSTITUTIONAL CONSTRUCTION



# FEATURED ARTISAN

## HT WOODSHOP

### How do you work on your craft within the Western Massachusetts community?

I moved to the area in late 2017 and opened up shop out of a garage space in Sunderland with a fellow North Benet St School graduate, Seth Capista Woodworking. Since then I have moved my shop twice; to Greenfield where I shared space with local cabinet makers Boxco Studio; and most recently to the historic Cottage Street Studios in Easthampton, where I share the building with 100+ makers and artists.

I teach beginning woodworking classes for women, trans and non-binary people at the community woodshop Hatchspace, in Brattleboro, VT. Taking on the role of teacher has been an unexpected gift to my creative practice, as I am reminded of the awe and wonder that woodworking presents through the eyes of a beginner. If you or someone you know are interested in learning to use woodworking equipment in a safe and encouraging environment, take a look at their website for our next class offering. I teach alongside Erin Bell of Curiosity Woodworks and Heather Dawson of Welkinwood.

Since 2022, I have been a member artist of the Sawmill River Arts Collective in Montague, where I work in exchange for gallery space. We strive to be a friendly, approachable and inspiring space for small-town artists and customers alike. My favorite part about the collective is serving on the Consignment and Marketing committees, where we create events and opportunities for local artists to be highlighted and celebrated within the gallery.

You can also find a selection of my furniture pieces at Joinery SF in Shelburne Falls.

### How does sustainability play a role in your business?

My art and business practice embrace a philosophy of excellent craftsmanship, locally sourced materials, traditional design standards, and encouraging care and repair of furniture and wooden wares.

### Is there a way in which you would like to work with local architects and designers that hasn't happened yet?

I would love to take on projects involving architectural turnings, historic reproductions and custom furniture pieces. I am also excited to collaborate with local art, design and construction businesses to create custom woodwork, as well as local stores and galleries to create special wood products that are catered to their clients and customers exclusively.

### What's your favorite part of your creative process? Can you describe your process?

In an ideal world, my creative process involves giving myself time and space to play, experiment and explore an idea, material or process without rigid expectations or attachments to outcomes. However, in reality my work is outcome driven so the majority of my creative process is rooted in the design stage. I really enjoy custom work for this reason; it is designing with restrictions of space, utility, materials and/or style; and it requires me to collaborate. Ultimately, my favorite part is woodworking every day! It's a practice that keeps me physically fit and strong; mentally engaged through learning, problem-solving and intense focus; and it has brought some of the best people into my life.



All Photos: John Polak



# FEATURED ARTISAN

## HT WOODSHOP







**OTO**

Collaborating with Design and Construction teams, OTO provides

- Environmental Due Dilligence Studies
- Geotechnical Studies and Assessments
- Civil Engineering Support
- Pre-Renovation Hazardous Materials Assessment and Testing
- MCP Compliance and LSP Services
- Construction Support and Oversight
- LEEDS and IBC Indoor Air Quality Testing
- and more.

SERVING NEW ENGLAND AND BEYOND FOR OVER 25 YEARS, AND PROUD TO ANNOUNCE OUR NEW STATUS AS A MASSACHUSETTS CERTIFIED WOMEN BUSINESS ENTERPRISE



**HELLO@OTO-ENV.COM**  
**413 . 788 . 6222**  
**WWW.OTO-ENV.COM**



**Industrial Hygiene** | **Geotechnical** | **Environmental**



- Design & Performance Analysis
- Thermal Analysis
- Code Compliance
- Preliminary Design Drawings
- Installation Shop Drawings
- Take-off & Estimating Services
- Custom Extrusion Design
- Field Support
- CEU credits

Contact us:  
**Don Schabacker**  
 dschabacker@pellasales.com

Visit our NEW showroom!  
**Pella Windows & Doors**  
 69 Ashley Avenue  
 West Springfield, MA 01089

The Coach House | Northampton, MA | Built in 1900



Historical Renovation | Completed in 2019



Design by Juster Pope Frazier Architects  
 Photo by CHODOS, Inc.



*Building History Since 1897*

www.dasullivan.com | 413-584-0310

Follow us online: 



**ENGINEERING VENTURES PC**

Serving New York & New England



Camp Becket Dining Hall, Becket, MA

Creative Civil & Structural Engineering Solutions

(518) 205-9141 | www.engineeringventures.com




Hill  
engineers  
architects  
planners

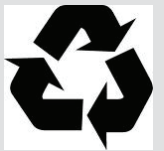
ARCHITECTURE • ENGINEERING • CIVIL/SURVEY • PLANNING



**75**  
1949-2024  
years

413.684.0925 hillengineers.com 50 Depot St. Dalton, MA 01226





## WMAIA COMMUNITY PROGRAMS : FALL 2024

SAVE THE DATE – registration will begin soon!

### **WMAIA Annual Meeting and Design Awards**

Tuesday, December 17, 2024

Olver Design Building at UMass Amherst

Coming later this fall – **WMAIA Film Series** – watch your enews for dates and registration information.

**To register for programs please visit [wmaia.org/events](http://wmaia.org/events) (calendar), follow the links in your enews or contact [director@wmaia.org](mailto:director@wmaia.org)!**

### **UMass BRUT: Windows on UMass**

Friday October 25 | 3:15-4:15PM | in person at 170 Design Building UMass/Amherst | 1 HSW

*UMass Dartmouth LARTS Building Renovation Project*

Friday October 25 | 4:30-5:30PM | in person at DuBois Library UMass/Amerst | 1 HSW

*DuBois Library 6th & 7th Floor Renovation Tour*

Wednesday November 20 | 5:30-6:30PM | in person at 170 Design Building UMass/Amherst | 1 LU

*Towards a New AI Architecture: Future of Practice*

### **BCT Series**

Monday October 28 | 4:00-5:15PM | Hybrid – ZOOM or in person at 170 Design Building UMass | 1 HSW

*PLAIN DESIGN \* BUILD – At Intersection of Architecture and Forestry*

Monday November 25 | 4:00-5:15PM | Hybrid – ZOOM or in person at 170 Design Building UMass | 1 HSW

*Recent Applications of Reality Capture Technology in Building and Civil Construction*

A note about WMAIA's enews:

Are you receiving our regular enews?

The enews is sent several times a month and is used to communicate information about programs and other opportunities.

If you are not receiving this information, please contact [director@wmaia.org](mailto:director@wmaia.org)