

WM | AIA

WINTER  
2024



MANDEL STUDIO  
LEVERETT MASSACHUSETTS  
NAOMI DARLING ARCHITECTS

R  
E  
T  
T  
E  
L  
S  
W  
E  
N



# NEWSLETTER OF THE WESTERN MASSACHUSETTS CHAPTER

## WMAIA ANNUAL MEETING 2023



WMAIA's 2023 Annual Meeting was held on December 12th at the Olver Design Building at UMass. More than 75 people attended the festive event. It was a lovely evening with ample time to reconnect with friends and colleagues. After the cocktail hour the group assembled for the business meeting...here are some of the highlights:

Incoming president Kerry Bartini AIA thanked outgoing president Garth Schwellenbach for his two years at the helm of WMAIA. The officers for 2024-26 are:

President: Kerry Bartini AIA

President Elect: Garrison Piers-Gamble Associate AIA

Secretary: Caryn Brause FAIA

Treasurer: Jody Barker AIA

The region's newly licensed architects were acknowledged: Brian Bordonaro; John Dekraker AIA; Ryan Keiper; Joseph Lesch; Jaime Ryznic; Stephen Stenson; and Aditya Pommair Surendhra AIA

After updates on the activities of AIA Massachusetts and the Strategic Counsel, COTE chair Jillian DeCoursey AIA provided a look at the upcoming COTE programs, which will focus on Carbon. Watch for details and registration information in your enews. Aelan Tierney AIA announced the sunsetting of our biannual Green Giants program as sustainability has become more integrated in all practice. She introduced WMAIA's final Green Giant award given posthumously to one of the program's founders, Laura Fitch AIA. The program concluded with a film celebrating Laura's life. If you missed the event you can still see the film. Visit [www.wmaia.org](http://www.wmaia.org) and look under "recent news" for the link.

## WMAIA STUDENT SCHOLARSHIPS 2023



This was the sixteenth year that WMAIA was able to award scholarships to students in the UMass M.Arch program. Students are asked to submit their best project along with a written statement that explains their design intent and approach to the project beyond the basic program requirements. A preliminary review of applications is completed by UMass Architecture + Design faculty. The WMAIA board does the final judging of applications. The judging criteria is design excellence and evaluation of the visual presentation and written statement. We are grateful for the matching grant we receive from AIA National and the support of Pella in order to fund this program. This year Pella's Pella + Purpose program enabled us to provide an additional \$500 scholarship. This year's winners were:

Ashik Mubarak Ali (\$1000)

Victoria Gitto & Viraja Bhosale (\$1000 joint award)

Colleen Tully (\$500)

**Congratulations to the winners!**

# OF THE AMERICAN INSTITUTE OF ARCHITECTS

## IN THIS ISSUE:

**ONE** WMAIA ANNUAL MEETING + STUDENT SCHOLARSHIPS 2023

**TWO** LETTER FROM WMAIA PRESIDENT KERRY BARTINI AIA

**THREE + FOUR** IN THE WORKS: CURRENT PROJECTS FROM WMAIA FIRMS

**FIVE + SIX** GARDNER ELEMENTARY: JONES WHITSETT ARCHITECTS

**SEVEN + EIGHT** THINGS TO DO + SEE IN WESTERN MASSACHUSETTS

**NINE + TEN** HILL ENGINEERS CELEBRATES 75TH ANNIVERSARY

**ELEVEN + TWELVE** FEATURED ARTISAN: JOINERY SF

**FIFTEEN** WMAIA SPONSORS

### THE WESTERN MASSACHUSETTS CHAPTER OF THE AMERICAN INSTITUTE OF ARCHITECTS

THE WMAIA NEWSLETTER IS PUBLISHED FOUR TIMES A YEAR. IT IS CIRCULATED TO ALL MEMBERS, ADVERTISERS AND SUBSCRIBERS. PLEASE DIRECT ALL NEWSLETTER CORRESPONDENCE TO RACHAEL CHASE, AT [EDITOR@WMAIA.ORG](mailto:EDITOR@WMAIA.ORG). ARTICLES, PHOTOS, NOTICES OF EVENTS AND OTHER INFORMATION ARE WELCOME. OPINIONS EXPRESSED IN THE NEWSLETTER ARE NOT NECESSARILY THOSE OF THE WMAIA. THE EDITOR RESERVES THE RIGHT TO REJECT OR REVISE MATERIAL AS SPACE AND SUBJECTIVE OPINION PERMIT.

COVER PHOTO: SEAN KERNAN

## A LETTER FROM NEW PRESIDENT KERRY BARTINI AIA

Happy New Year! Here's hoping we were all able to find time to spend with loved ones and catch our breath before diving back into our work in 2024.

As I step into the role of President, I must give a very big thank you to Garth Schwellenbach AIA for his guidance and leadership over the past two years and to Lorin Starr for her strength and commitment to WMAIA. I am lucky enough to be stepping into a role that has the support of an active and lively board, bringing diverse experiences and concentrations to the table.

According to recent studies, Massachusetts is among the top states people are moving away from. Hard to believe, considering the incredible community we have here in our corner of the northeast. Thanks to all of you and with the help of our sponsors, WMAIA has a thriving membership. We continue to offer a mix of both in-person and online programming, our Committees continue to evolve and incorporate fresh perspectives, and our Emerging Professionals team will soon be announcing a new grant. We're excited! While things look different than they did before March of 2020, let's keep facing the challenges of our profession and celebrating the small victories together.

And as always, please feel free to reach out to our Board and Committees with any input. We welcome your involvement and look forward to working with you all in the coming year.

All the best for a healthy, prosperous 2024!

Kerry Bartini AIA NCARB



### WMAIA EXECUTIVE COMMITTEE

#### PRESIDENT:

KERRY BARTINI AIA

#### PRESIDENT ELECT:

GARRISON PIERS-GAMBLE  
ASSOCIATE AIA

#### TREASURER:

JODY BARKER AIA

#### SECRETARY:

CARYN BRAUSE FAIA

#### PAST PRESIDENT:

GARTH SCHWELLENBACH AIA

#### MEMBERS:

LEAHNA AGUSTIN AIAS

WENDY BROWN AIA

HELEN FANTINI AIA

MOHAMED IBRAHIM AIA

MY-RON HATCHETT AIA

STEPHEN SCHREIBER FAIA

KRISTIAN WHITSETT AIA

#### EXECUTIVE DIRECTOR:

LORIN STARR

#### NEWSLETTER EDITOR:

RACHAEL CHASE

#### EMERGING PROFESSIONALS

##### COORDINATOR

GARRISON PIERS-GAMBLE  
ASSOCIATE AIA

#### ARCHITECT LICENSING ADVISOR

KERRY BARTINI AIA

#### WEBSITE MANAGER

JULIE WAGGONER HON. WMAIA

#### SOCIAL MEDIA

LEAHNA AGUSTIN AIAS

#### FILM SERIES

ANDREW BAGGE AIA

#### DISASTER ASSISTANCE COORDINATOR

LUDMILLA PAVLOVA AIA

#### COTE COMMITTEE CHAIR

JILLIAN DeCOURSEY AIA



# IN THE WORKS

CURRENT PROJECTS FROM CHAPTER FIRMS

## JABLONSKI | DEVRIESE ARCHITECTS



### 443 State Street, Springfield Massachusetts

Historic rehabilitation funded by City of Springfield ARPA funds. 35 units of housing with retail shops, offices, and community meeting space. Approved by Springfield Historical Commission in September 2023.

## COMMERCIAL & RESIDENTIAL WINDOW SOLUTIONS



- Initial project and product application consultation
- Assistance with Green Building requirements and LEED® Certification
- Custom product and installation design
- 2-D (CAD) details and 3-D (BIM) models for Pella® Products
- Professional installation and shop drawings
- "Mobile Showroom" samples/demos available
- Pella + Purpose CEU program

Mary Lynn Hadix  
Architectural Representative  
Pella Products, Inc.  
mhadix@pellasales.com  
413.824.2422

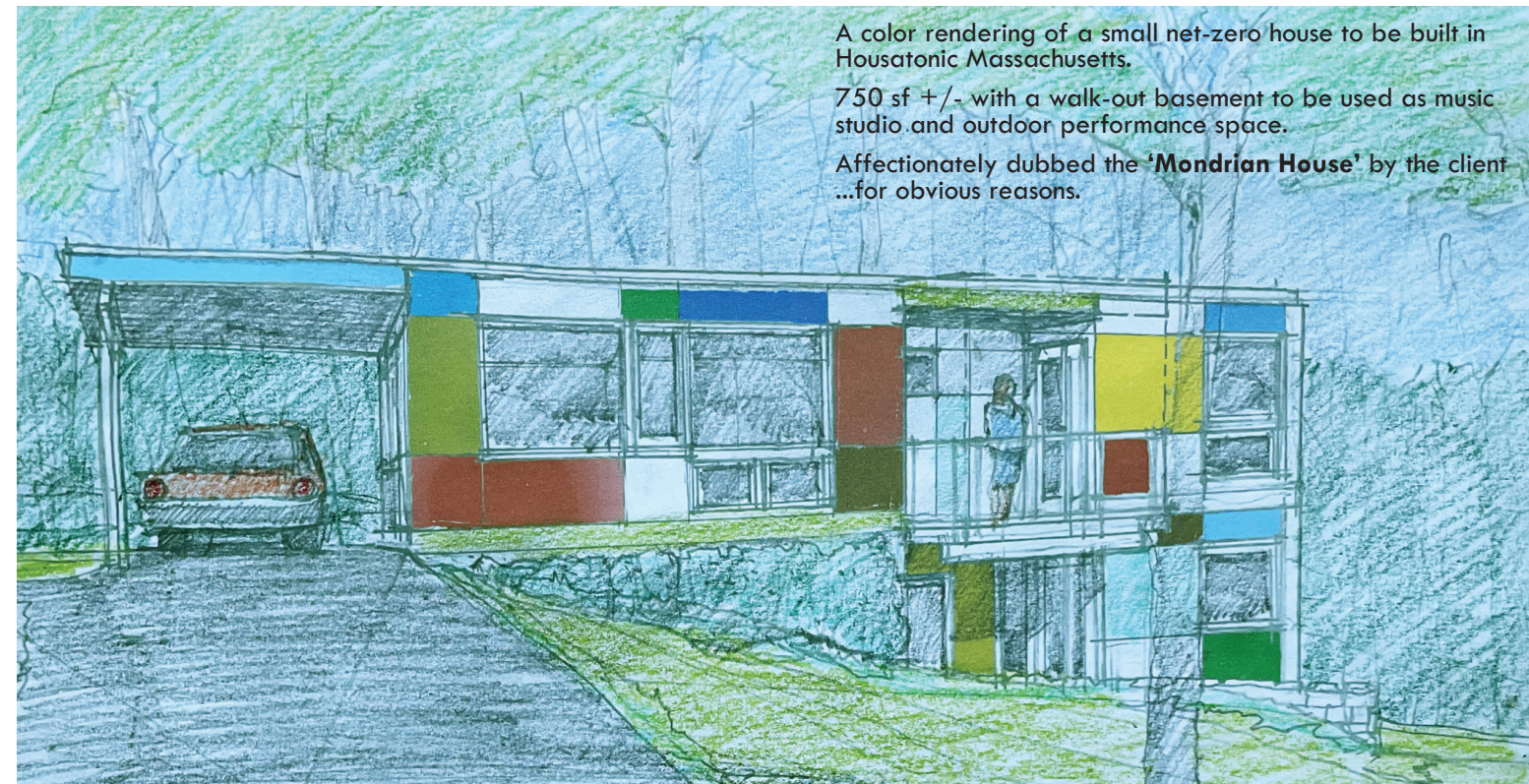
Mary Lynn Hadix  
mhadix@pella  
413.824.2422

## SUPPORTING ARCHITECTS OF WESTERN MASSACHUSETTS

# IN THE WORKS

CURRENT PROJECTS FROM CHAPTER FIRMS

## STEPHEN GERALD DIETEMANN ARCHITECT



A color rendering of a small net-zero house to be built in Housatonic Massachusetts.

750 sf +/- with a walk-out basement to be used as music studio and outdoor performance space.

Affectionately dubbed the 'Mondrian House' by the client ...for obvious reasons.

## TOM DOUGLAS ARCHITECTS



**The Spring House** is built into a steep hillside, open to the south to optimize views and solar orientation. This two level home accommodates the client's desire for multigenerational living potential and can be easily split into 2 separate dwellings, connected by a single access stair. This home is Net Zero Ready and will prioritize the use of locally-sourced materials.



# GARDNER ELEMENTARY

## A SCHOOL IN THE WOODS FOR THE CHILDREN OF GARDNER

Gardner, Massachusetts sought to consolidate two aging elementary schools that dated from 1926 and 1951 into a single school that would inspire learning. An extensive feasibility study settled on a plan for a new PreK to 4th grade school for 1,000 students on a wooded, 45-acre hill separated from the District's Middle School and High School campus by a series of wetlands. JWA used the natural setting as inspiration for a more biophilic approach to K12 design, nicknaming Gardner Elementary "the school in the woods."

Research presentations to the community explored universal access; healthy building materials; biophilia; the benefits of natural daylight and views; and the benefits of natural play. The final project drew heavily on research efforts and community consensus, resulting in a school comprised of three distinct building masses connected by light and airy bridges and grounded in a naturalistic site plan designed by Stimson Associates. Particular attention was given to the circulation within the building. Instead of enclosed stairwells, the connecting corridors and bridges between volumes offer stunning views to the surrounding New England landscape.

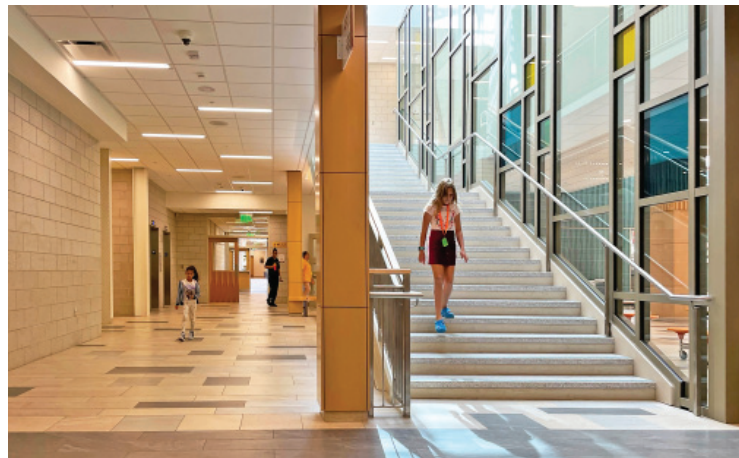
Classrooms are open and bright, a far cry from the grim conditions that teachers and students were used to in their old schools— with exposed structural systems, acoustic metal deck, and skylights that distribute daylight throughout. Classroom wings are oriented east-west to capitalize on northern and southern light. Windows are slightly taller on the north elevation – to allow daylight deeper into the classroom.

Reflective panels designed by JWA and LAM Lighting Design are placed high on the third floor of A-Wing and second floor of C-Wing to bounce daylight and luminescent colors deep into a light-well serving common areas below. The panels work as an art installation inside of the building, and are used as a teaching tool – relating to seasons, sun angles, and cardinal directions.

Because healthy classrooms promote healthy learners, care was taken to optimize the indoor air quality and verify outcomes through the NE-CHPS certification process. The mechanical system delivers highly filtered fresh air through an energy recovery ventilator and a displacement delivery system that provides air to students at their level. Finish materials are low VOC, PFAS-free and phthalate -free, consisting predominately of linoleum, porcelain tile, and judiciously located carpeting.

The shared spaces include wood panels, structural trees, graphic depictions of nature, calculated views, regional stone, and colors that reflect the seasonal changes of the New England forest. Walking out from the bridges or cafeteria into the playground that lies at the edge of the forest, students find themselves in a wonderland of inspiring and distinct playgrounds including a "Summit Garden", "Hemlock Bowl", and an "Oak Knoll." Swings, climbing structures, performance platforms, and slides are integrated into the landforms, creating a subtle gradient between the woodland walking paths and nearby wetlands and the more formally designed spaces of the new school.

The completed 147,120gsf school was constructed during the height of the pandemic and managed to achieve completion under the anticipated \$84M budget despite considerable supply chain challenges.



# GARDNER ELEMENTARY

## JONES WHITSETT ARCHITECTS







## Forward Thinking

A WHOLE NEW APPROACH TO ENGINEERING DESIGN


LN Consulting provides building design solutions focused on health and sustainability, forged in analysis and technology, in collaboration with our clients and the communities they serve. Our consulting firm delivers intelligent, forward-thinking solutions that address building resiliency, energy optimization, and occupants' safety.



(413) 776-9580  
Northampton, MA  
(802) 655-1753  
Burlington, Vermont  
[LNconsulting.com](http://LNconsulting.com)

## Tighe&Bond

Creative MEP engineering solutions for Western Massachusetts architects.



Project: River Valley Co-Op  
Architect: Thomas Douglas Architects

# www.tighebond.com



## 413.586.8287

WRIGHT-BUILDERS.COM

48 BATES STREET  
NORTHAMPTON, MA 01060



CELEBRATING 50 YEARS AS WESTERN NEW ENGLAND'S  
LEADER IN SUSTAINABLE AND HIGH-PERFORMANCE  
RESIDENTIAL, COMMERCIAL & INSTITUTIONAL CONSTRUCTION

## MASS MoCA

### JAMES TURRELL: C.A.V.U.

*"I can make the sky any color you choose." — James Turrell*

Thirty years in the making, James Turrell's largest free-standing circular Skyspace — titled C.A.V.U. — is now open on the MASS MoCA campus. Measuring 40 feet in diameter and 40 feet high, this repurposed concrete water tank transforms into one of Turrell's signature immersive light installations, carving out a small piece of the sky and framing it as a canvas with infinite depth. C.A.V.U. joins the exhibition Into the Light, a long-term retrospective of Turrell's work that currently includes nine light installations, making MASS MoCA the only North American institution offering a comprehensive overview of the artist's career.

C.A.V.U. is open during museum hours with no reservations required. During mid-day, the dome will be sealed and the space will be transformed into a tightly-controlled multisensory environment, with light projected across the cylindrical interior walls and domed ceiling, and sound altered by the contours of the architecture.

During limited days, at dusk, the oculus in the ceiling of C.A.V.U. will be open, framing the changing colors of the twilight while subtle interior lighting creates the illusion that the heavens are just beyond the viewer's grasp. Limited reservations for James Turrell: C.A.V.U. (Skyspace) at dusk are available on a rolling basis.





**WESTERN BUILDERS**  
GRANBY, MA est. 1975

### BUSINESS SERVICES

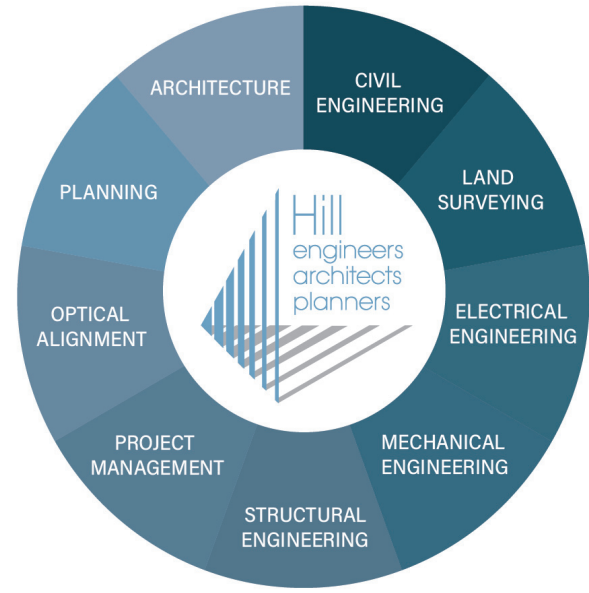
- Preconstruction
- General Contracting
- Construction Management





413-467-9171 x3071  
73 Pleasant St. Granby MA  
[www.westernbuilders.com](http://www.westernbuilders.com)

## Hill-Engineers, Architects, Planners, Inc.



Hillengineers.com  
413.684.0925 – 50 Depot St. Dalton, MA. 01226

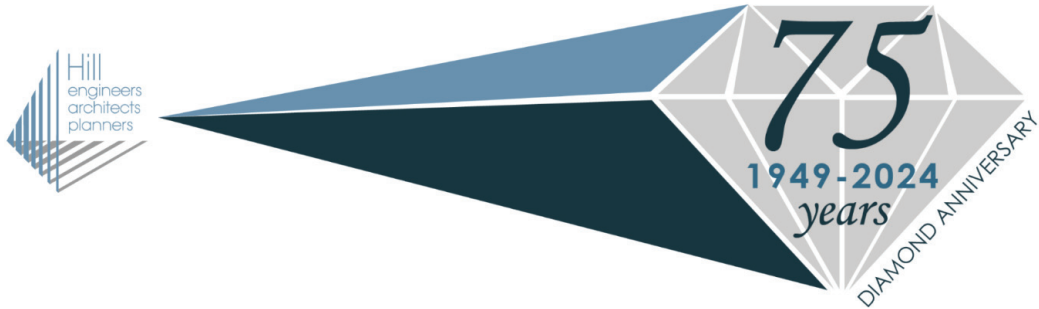




This year Dalton-based Hill-Engineers, Architects, Planners, Inc. celebrates their 75th Anniversary. Hill was formed in 1949, initially offering mechanical engineering tailored for the pulp and paper industry. Over time, they’ve evolved into a full-service A/E architecture and engineering firm with over 40+ employees (several of whom are WMAIA members) with multifaceted specializations housed under one roof. Hill’s in-house resources include architectural design as well as a full range of engineering services (civil, mechanical, structural, plumbing, HVAC, electrical, and process-oriented disciplines). Hill also provides site surveying, land development planning, environmental planning, and permitting.

If you have visited places like the Berkshire Medical Center, Greylock Federal Credit Union, Proprietors Lodge, Crane & Co., Lenco, Jiminy Peak, Canyon Ranch, Kripalu, Mahaiwe Theater, Mount Holyoke College, Pittsfield Country Club, General Dynamics Advanced Mission Systems and many more, chances are you’ve encountered the work of Hill-Engineers. Last June, WMAIA toured Hill’s recent renovation of the Berkshire Family YMCA in Pittsfield, a great contribution to the cultural vitality of the downtown.

**Congratulations Hill on this milestone anniversary!**



GAMBLE AUDITORIUM AT  
MOUNT HOLYOKE COLLEGE

Gamble Auditorium was constructed in 1970 as a 300-seat tiered auditorium with rear projection rooms. The primary entrance is from the upper level at the rear of the room. The project provided a refresh of the 70’s dark concrete block aesthetic to create a more modern look and feel, and to highlight the updated technology that was added to this prime campus venue.

Work included wheelchair access at the lower speaker floor level and at intermediate seating locations.

New tablet-arm seating in various sizes replaced the fifty-year-old well-worn seats. All new lighting contributes to the revitalization.

Photos by: Leigh Chodos, CHODOS Inc.





# FEATURED ARTISAN JOINERY SHELBURNE FALLS

**How do you curate your shop / find artisans to feature within the Western Massachusetts community?**

I grew up in Shelburne Falls, so I physically know my way around the area and have a good foundation of local knowledge, but coming back home after 15 years of living in New York City meant reintroducing myself to old friends and forming plenty of fresh connections with a new generation of craftspeople who make Western Massachusetts their home. Social media has been a great way to make connections to both local creators and potential clientele as well.

Currently, we have 28 artisans and are continuing to grow at JoinerySF, all from within approximately 30 miles of our showroom location. I have a certain mixed-era minimalist perspective I'd like to uphold in the space. It's been a pleasure working with every single one of the selected creators so far. They've largely intuited what I'm going for and I frankly haven't said "no" to much from any of them.

**How does sustainability play a role in your business?**

Reducing the negative impacts of globalization on our environment and human psychology is a central tenet of JoinerySF. Everything in the showroom (with the exception of a few vintage pieces) is constructed locally by individual craftspeople using local materials. To the extent that any rare/tropical woods or imported materials are used, they are sustainably and ethically sourced or upcycled as a rule. I have an open conversation with all of the creators about this and will always strive to source as locally as possible at all points in any production process. I care deeply about this and I know everyone on the roster does too.

**Is there a way in which you would like to work with local architects and designers that hasn't happened yet?**

My goal is for Joinery SF to be the premier space in Western Mass where architects and designers come to interact with the work of the area's finest furniture makers and contemporary craftspeople. Nearly every object for sale in the showroom is a handmade one off, but we can also build to spec, and help to incorporate custom ideas into plans and projects. Anything from wholly unique handmade multi-era furniture and built-ins, to custom ceramic lighting fixtures, to loom-woven accent towels, to local wool-derived insulation batting is possible here at Joinery SF, and I'd love to talk about it.

**What's your favorite part of your creative process? Can you describe your process?**

I'm coming at this from a 15-year career in photography, shooting commercial interiors, lifestyle advertising, and portraiture. My creative process is steeped in the image-making fundamentals of shape, frame balance, depth, and color theory. I rely on this experience to develop the feel of the showroom and build presence for the work shown at Joinery SF. I have the benefit of being able to produce all of our photography in-house for social media and the website, which is in development.

For now, the shop and the featured artisan's work can be seen on Joinery's Instagram page at @joinerySF.

The shop is located at 44 State Street in Shelburne Falls MA, and is open Saturdays and Sundays from 12-5, and by appointment at info@joinerysf.com.



©2023 Marvin Lumber and Cedar Co., LLC.



## Make space for lasting performance.

Within one commercial project lies thousands of design requirements. As you translate your specifications into reality, tap into Marvin for support. Beyond high-quality windows and doors, you'll find we have knowledgeable experts who can help you realize your exacting vision, not to mention your carefully charted timelines. At Marvin, we're here to help you make space for what matters most to you and your project.

[marvin.com/architectural-resources](https://marvin.com/architectural-resources)

# FEATURED ARTISAN JOINERY SHELBURNE FALLS



Geoff McKonly



Charles Thompson      Charles Thompson      Hank Livingston      Fred Hubbard      Charles Thompson  
Top Left: Wood Boxes: Hank Livingston / Ceramic Plate: Vanessa Kerby / Corner table and turned bowl: Heather Tauck  
Top Right: Vase: Studio Feeler / Bowl: Seinberg Made / Quilt: Rae Heller / Coffee Table: Heather Tauck / Stool: Charles Thompson  
Benches in background Stevie Jick    Middle Left: Elm live edge table in the foreground by Sam French.





SERVING NEW ENGLAND AND BEYOND FOR  
 OVER 25 YEARS, AND PROUD TO ANNOUNCE OUR  
 NEW STATUS AS A MASSACHUSETTS CERTIFIED  
 WOMEN BUSINESS ENTERPRISE



HELLO@OTO-ENV.COM  
 413 . 788 . 6222  
 WWW.OTO-ENV.COM



Collaborating with Design and Construction teams, OTO provides

- Environmental Due Dilligence Studies
- Geotechnical Studies and Assessments
- Civil Engineering Support
- Pre-Renovation Hazardous Materials Assessment and Testing
- MCP Compliance and LSP Services
- Construction Support and Oversight
- LEEDS and IBC Indoor Air Quality Testing
- and more.

Industrial Hygiene | Geotechnical | Environmental



Serving New York & New England



Camp Becket Dining Hall, Becket, MA

Creative Civil & Structural Engineering Solutions

(518) 205-9141 | [www.engineeringventures.com](http://www.engineeringventures.com)



Julie Waggoner  
 Affiliate WMAIA  
[jwaggoner@micablue.com](mailto:jwaggoner@micablue.com)  
 413-665-2280

Graphic Design  
 Web Design  
 Copy Writing  
 Photography





**ART**  
**Engineering**  
 we build the future.

38 Front Street FL 3 Worcester, MA 01608  
 t. 508-797-0333 f. 508-797-5130



Develop | Build | Manage




**Build your legacy with Keiter**

Our passion is to help our clients build the integral foundations of their legacy.

► LEARN MORE AT KEITER.COM

The Coach House | Northampton, MA | Built in 1900



Historical Renovation | Completed in 2019



Design by Juster Pope Frazier Architects  
Photo by CHODOS, Inc.



Building History Since 1897

[www.dasullivan.com](http://www.dasullivan.com) | 413-584-0310  
 Follow us online:
 







## WMAIA COMMUNITY NEWS

### Thanks to WMAIA's 2023-2024 Sponsors and Corporate Affiliate Members!

#### COPPER SPONSORS enews to see upcoming WMAIA programming!



#### CORPORATE AFFILIATE MEMBERS, PROGRAM SPONSORS & ADVERTISERS:

Berkshire Design Group Inc. • Dodson & Flinker Inc • Engineering Design Associates  
Hill Engineers, Architects & Planers • Lexington Group Inc.  
MicaBlue Creative • MJ Moran • National Vinyl LLC • Olander Brick  
Renaissance Builders. • Ryan Hellwig PE • Sierra Pacific • Tighe & Bond

Check **WMAIA enews** to see upcoming WMAIA programming!

#### A note about WMAIA's enews:

Are you receiving our regular enews?

The enews is sent several times a month and is used to communicate information about programs and other opportunities. If you are not receiving this information, please contact [director@wmaia.org](mailto:director@wmaia.org)