



RED GATE FARM EDUCATION CENTER  
ASHFIELD MASSACHUSETTS  
KUHN RIDDLE ARCHITECTS



# NEWSLETTER OF THE WESTERN MASSACHUSETTS CHAPTER

## COVER STORY : RED GATE FARM EDUCATION CENTER



Red Gate Farm (RGF) in Ashfield Massachusetts, has been serving campers for over 20 years using a converted chicken coop for camp programs. Kuhn Riddle Architects began working with RGF to design new Program and Student Housing buildings in 2020. The main program space needed to be a +/-2,500 sf room with no columns to serve as dining room, special function room, and multipurpose program space. The warmth of a post & beam frame and wood finishes echoed the interior of the big red barn on the farm where special functions were previously held. This main space is supported by a commercial kitchen, pantry, staff offices, and public bathrooms. The Student Housing building provides bedrooms for 40 campers and four teachers, along with basement mechanical space and shop space for the farm. RGF wanted the new buildings to be sited in the same location as the existing building, so in the Fall of 2021 the old coop was demolished and excavation began. The new buildings will allow RGF to host campers year-round and will provide space for special events.



Photos: KRA

DO YOU HAVE A COVER STORY?  
EMAIL [EDITOR@WMAIA.ORG](mailto:EDITOR@WMAIA.ORG)

# OF THE AMERICAN INSTITUTE OF ARCHITECTS

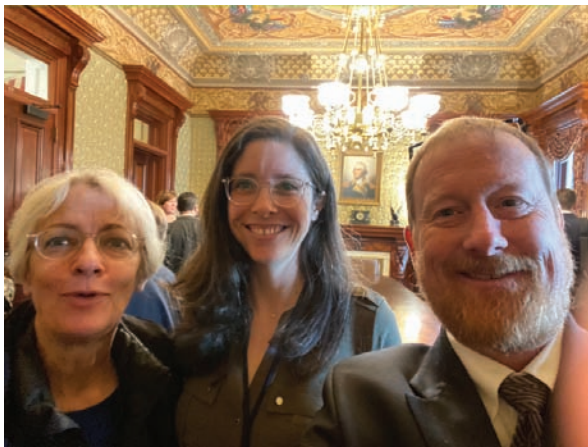
## IN THIS ISSUE:

- ONE** COVER STORY: RED GATE FARM, ASHFIELD MA
- TWO** THOMAS HARTMAN AIA GOES TO THE WHITE HOUSE
- THREE TO SIX** IN THE WORKS: CURRENT PROJECTS FROM WMAIA FIRMS
- SEVEN + EIGHT** THINGS TO DO + SEE IN WESTERN MASSACHUSETTS
- NINE** WMAIA SCHOLARSHIP FUND
- TEN** RECOGNITION: EMERGING PROFESSIONAL FRIENDLY FIRMS
- ELEVEN TO THIRTEEN** FEATURED ARTISAN: GILL CC WOODWORKS
- FIFTEEN** WMAIA FALL 2023 PROGRAMS

### THE WESTERN MASSACHUSETTS CHAPTER OF THE AMERICAN INSTITUTE OF ARCHITECTS

THE WMAIA NEWSLETTER IS PUBLISHED FOUR TIMES A YEAR. IT IS CIRCULATED TO ALL MEMBERS, ADVERTISERS AND SUBSCRIBERS. PLEASE DIRECT ALL NEWSLETTER CORRESPONDENCE TO RACHAEL CHASE, AT [EDITOR@WMAIA.ORG](mailto:EDITOR@WMAIA.ORG). ARTICLES, PHOTOS, NOTICES OF EVENTS AND OTHER INFORMATION ARE WELCOME. OPINIONS EXPRESSED IN THE NEWSLETTER ARE NOT NECESSARILY THOSE OF THE WMAIA. THE EDITOR RESERVES THE RIGHT TO REJECT OR REVISE MATERIAL AS SPACE AND SUBJECTIVE OPINION PERMIT.

## MR. HARTMAN GOES TO THE WHITE HOUSE



Left: The big table

Above: Tom Hartman AIA and Jean Carroon FAIA with Heather Clark, Director, Building Emissions, White House Domestic Climate Policy Office

WMAIA member and AIA MA board member Tom Hartman AIA was invited to join an AIA cohort for a meeting at the White House on September 29, 2023. The purpose of the meeting was to review the announcement of a Zero Emissions Building National Definition. The definition will include “three pillars”: energy efficiency, no on-site emissions, and operating with 100 percent renewable energy. The meeting was arranged through the AIA Strategic Council, and of the 16 AIA attendees from around the country, four were from Massachusetts. NREL and DOE also participated in the discussion. In the coming months we have been asked to work with the White House to further develop the standard, and to seek input from our constituents. Stay tuned...

### WMAIA

#### EXECUTIVE COMMITTEE

##### PRESIDENT:

GARTH SCHWELLENBACH AIA

##### PRESIDENT ELECT:

KERRY BARTINI AIA

##### TREASURER:

GARRISON PIERS-GAMBLE  
ASSOCIATE AIA

##### SECRETARY:

CARYN BRAUSE FAIA

##### PAST PRESIDENT:

J. KRISTIAN WHITSETT AIA

##### MEMBERS:

LEAHNA AGUSTIN AIAS

JODY BARKER AIA

WENDY BROWN AIA

HELEN FANTINI AIA

MOHAMED IBRAHIM AIA

MY-RON HATCHETT AIA

STEPHEN SCHREIBER FAIA

##### EXECUTIVE DIRECTOR:

LORIN STARR

##### NEWSLETTER EDITOR:

RACHAEL CHASE

##### EMERGING PROFESSIONALS

##### COORDINATOR

GARRISON PIERS-GAMBLE  
ASSOCIATE AIA

##### ARCHITECT LICENSING ADVISOR

KERRY BARTINI AIA

##### WEBSITE MANAGER

JULIE WAGGONER HON. WMAIA

##### SOCIAL MEDIA

LEAHNA AGUSTIN AIAS

##### FILM SERIES

ANDREW BAGGE AIA

##### DISASTER ASSISTANCE COORDINATOR

LUDMILLA PAVLOVA AIA

##### COTE COMMITTEE CHAIR

JILLIAN DECOURSEY AIA



# IN THE WORKS

CURRENT PROJECTS FROM CHAPTER FIRMS

## JONES WHITSETT ARCHITECTS



THE CRAFT AVENUE HOUSING PROJECT FOR VALLEY COMMUNITY DEVELOPMENT will provide 30 units of low income housing to the downtown area of Northampton. The buildable lot was carved out of a publicly-owned parcel immediately behind City Hall and adjacent to the Municipal Offices Annex Building. The project targets both social and environmental resilience goals. It will meet Passive House Certification requirements and will include first floor level tenant community space, offices for building management and tenant consultation areas as well as bike and tenant storage. The project is one of the first design projects in downtown Northampton to comply with the City's new form-based code.

## UMASS DESIGN BUILD PROGRAM

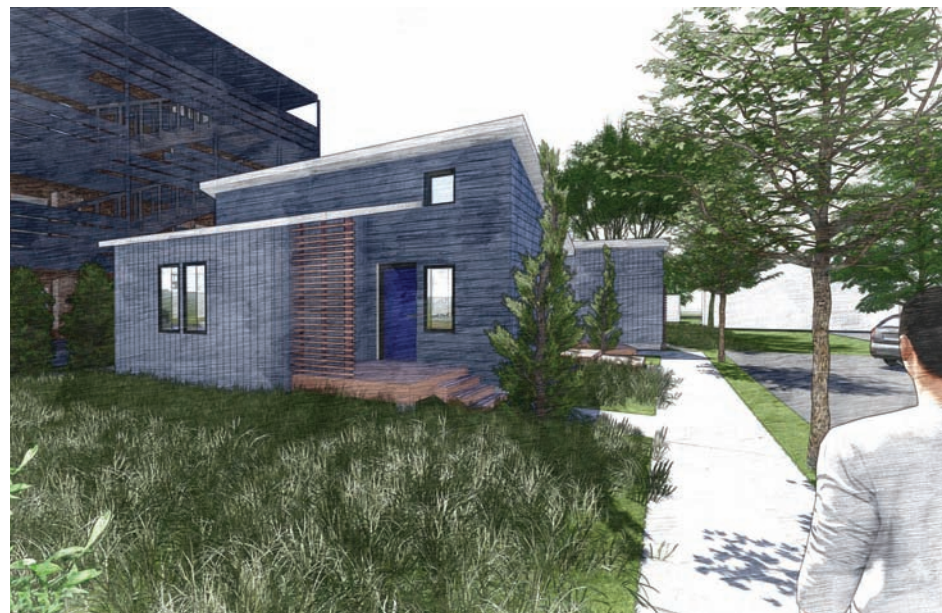
UMass DesignBuild (UMDB) brings together students from the UMass Department of Architecture, Building and Construction Technology program, and the Five College Architectural Studies program to DESIGN and BUILD small, net zero-energy, and low-carbon homes for affordable housing providers in the Pioneer Valley. This year, the student team designed and built the "Paper House" in collaboration with OneHolyoke Community Development Corporation. Construction is nearing completion, and the team is preparing to move the house to its permanent site in Holyoke, MA. More information about the project and the UMDB program can be found on the UMDB Blog (<https://blogs.umass.edu/umassdesbuild/>)

The UMDB team is hosting an open house to celebrate and showcase the students' work while the project is still on campus. Please join us on Thursday, November 11 from 4-5:30 to see the Paper House and learn more about UMass DesignBuild.

What: UMass DesignBuild Open House

When: Thursday, November 2, 4-5:30pm

Where: DOC Campus Build Site on the UMass Campus, at the corner of East Pleasant and Olympia Place, Amherst, MA



# 3

PAPER HOUSE

# IN THE WORKS

CURRENT PROJECTS FROM CHAPTER FIRMS

## DIETZ & COMPANY ARCHITECT



© Dietz & Company Architects 2023

GREENSTEAD GROVE is a new 43-unit multifamily housing development located in Ludlow, MA. The development will consist of 7 energy-efficient townhouse style buildings. Construction is expected to start in early 2024 and be completed in early 2025.

## JABLONSKI | DEVRIESE ARCHITECTS



FRUIT FAIR, CHICOPEE MASSACHUSETTS: Independent grocery store addition, adding rooftop greenhouses to grow produce on site. Governor Maura Healey visited the site Summer 2023 to present owner with a \$500,000 grant to complete the project. Construction begins this fall.

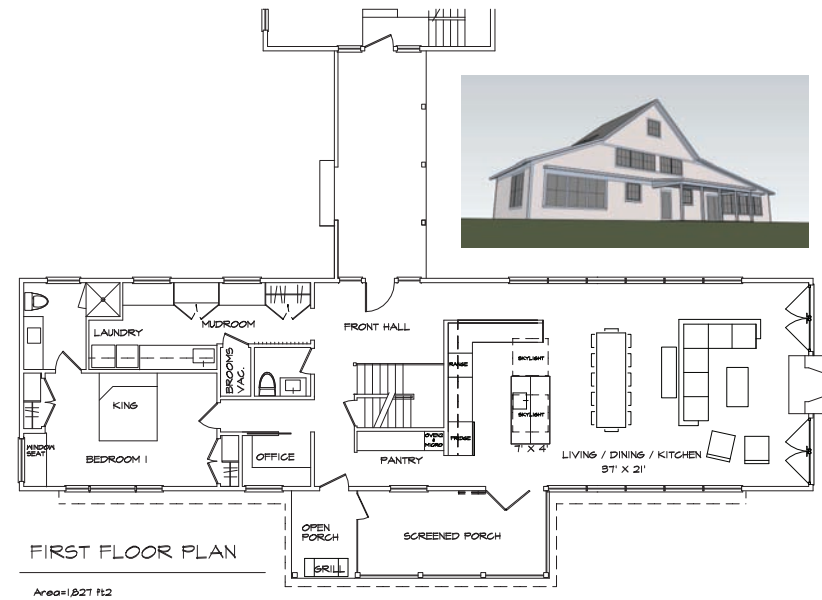
# 4



# IN THE WORKS

CURRENT PROJECTS FROM CHAPTER FIRMS

## BURR AND McCALLUM ARCHITECTS



Back in the sixties, two brothers came every year to a small brick house in central Vermont, for skiing and other country activities. They now want to build a new house across the way for their own families to share. Aside from the obvious Low House vibe, this shape is an only slightly stretched out interpretation of a local vernacular precedent, often rendered in stone. This house is in Chester, Vermont.

## NOVA DESIGN STUDIOS

WHOLE HOUSE RENOVATION  
WILLIAMSBURG MASSACHUSETTS



# IN THE WORKS

CURRENT PROJECTS FROM CHAPTER FIRMS

## TOM DOUGLAS ARCHITECTS

THE FOOD BANK OF WESTERN MASSACHUSETTS



The design for The Food Bank of Western Massachusetts' new headquarters, currently nearing completion in Chicopee, features an open colonnade and communal entry space. The welcoming entry structure encourages community engagement by providing an open, light-filled gathering space and reflects the Food Bank's commitment to local food production and the well-being of the community.

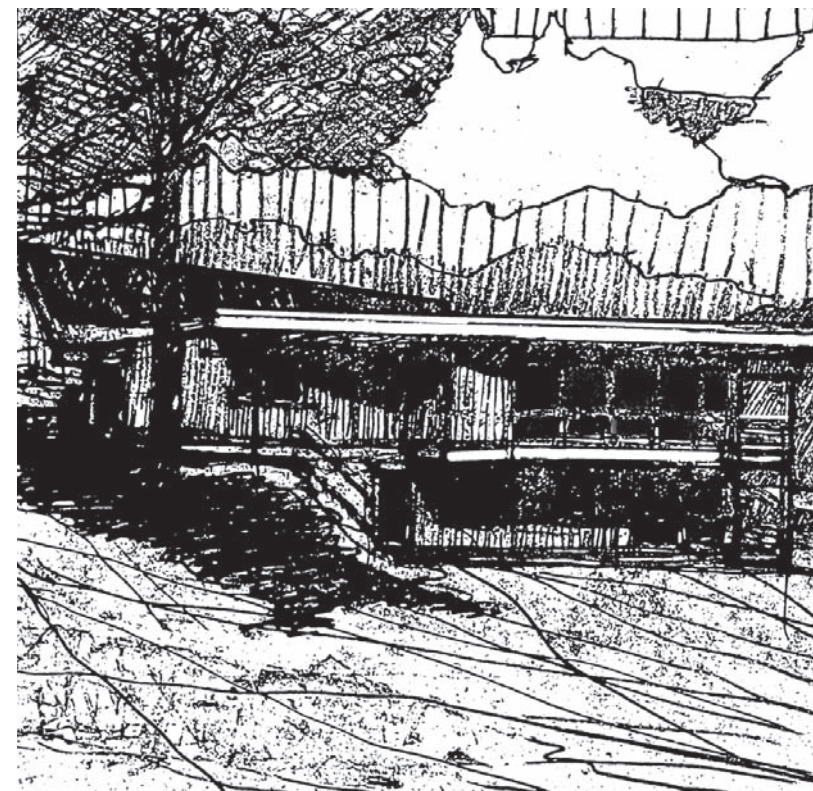
## STEPHEN GERALD DIETEMANN ARCHITECT

'NET-ZERO' HOUSE,  
HOUSATONIC MASSACHUSETTS

This is a small two-story house, approximately 1400 sf, including the walk-out 'basement' which will be used as a music recording / performance studio and as an artist's studio; the clients are a musician and an artist.

When fully built out the house will have 2 bedrooms, 1 bathroom and a shared living/kitchen/dining along with a large deck on the east end of the house.

The site is sloped and quite small too, approximately 1/8 acre and is within walking distance of the village of Housatonic and there are views of the Berkshire Hills / Monument Mountain to the south and east.







## THE CLARK

**Humane Ecology: Eight Positions** features artists who explore the inseparability of the natural and social. Each represents a distinct approach and place, or position, but all think in ecological terms—that is, about the complex relationships between living things and their environments. In doing so, they challenge ideas of “nature” as something separate from humans. They also center humans who have often been marginalized in discussions of the environment. Through sculpture, video, sound installation, and plantings, these artists illuminate patterns of cultivation and care, migration and adaptation, extraction and exploitation that span historical, geographical, and species lines.



  
**WRIGHT**  
BUILDERS INC.  
  
413.586.8287  
  
WRIGHT-BUILDERS.COM  
  
48 BATES STREET  
NORTHAMPTON, MA 01060



CELEBRATING 50 YEARS AS WESTERN NEW ENGLAND'S  
LEADER IN SUSTAINABLE AND HIGH-PERFORMANCE  
RESIDENTIAL, COMMERCIAL & INSTITUTIONAL CONSTRUCTION

## MASS MoCA



ELLE PÉREZ: INTIMACIES

Pérez has become known for photographs that capture with a unique sense of ease the intimacy between friends, lovers, bodies, and nature—as well as the intimate relationship between photographer and subject.



 DO YOU HAVE NEWS  
TO SHARE WITH THE WMAIA COMMUNITY?  
EMAIL [EDITOR@WMAIA.ORG](mailto:EDITOR@WMAIA.ORG)



ANNE SAMAT: LOVE

Anne Samat, a Malaysian artist from Kuala Lumpur, spreads inspiring reminders that we are surrounded by love and compassion. In her solo Kidspace exhibition, the artist adorns traditional Southeast Asian Pua Kumbu weavings with humble household goods from 99 cent stores and thrift shops to construct totemic figurative sculptures. Brightly colored and heavily detailed, each one resonates as an avatar of a family member or friend. Samat’s work is dedicated to the feeling of love – found in personal relationships, in past generations that paved the way for her, and in potential feelings that could exist among strangers. The centerpiece of the installation will be a new piece that Samat created specifically for MASS MoCA. The sculpture, a larger than life size figure with outstretched arms, is created to feel like one is entering a hug.

### LIKE MAGIC

In times of uncertainty, people often turn towards technologies of magic for solace and strength. These technologies are not the props used for stage magic (rabbits in hats, scarves hidden up sleeves) but rather are tools (devices, talismans, rituals, incantations) created by humans to help them survive and thrive in a chaotic world. The exhibition Like Magic brings together artists who employ technologies of magic to resist systems that attempt to surveil and control people’s lives and stories, often because of their race, ability, sexuality, gender identity, indigeneity, or immigration status.



HELP PELLA SUPPORT WMAIA'S SCHOLARSHIP FUND!

Last Call for Pella + Purpose to Support 2023 Western Mass AIA Scholarship Fund!

Any architects or designers who would still like to participate in Pella + Purpose for 2023, please reach out to [mhadix@pellasales.com](mailto:mhadix@pellasales.com) or 413.824.2422.

Pella is scheduling in-person CEU/HSW and demo sessions to support the WMAIA Scholarship fund: \$150 per participant completing both sessions.


If you need to catch one or both, let Mary Lynn know; after hours group events are available.

**mica  
blue**  
CREATIVE

Julie Waggoner  
Affiliate WMAIA  
[jwaggoner@micablue.com](mailto:jwaggoner@micablue.com)  
413-665-2280

Graphic Design  
Web Design  
Copy Writing  
Photography





**ART  
Engineering**  
we build the future.

38 Front Street FL 3 Worcester, MA 01608  
t. 508-797-0333 f. 508-797-5130

The Emerging Professional Friendly Firm program aims to identify firm initiatives that promote the advancement of Emerging Professionals through professional development and personal growth opportunities. The accuracy of the data reported through this questionnaire benefits firms, firm leadership and Emerging Professionals.

This program has an ability to attract and retain employees by sending a message to current employees, future employees, and other regional firms that the firm has evaluated their policies from an emerging professional lens, the firm recognizes emerging professionals at their firm, and the firm values Emerging Professionals development to sustain the future growth of their practice. For firm leaders, the infographics created from the data collection enables leadership to compare their firm policies and professional development opportunities with other firms in the region. For an Emerging Professional, the designation can help identify firms in the region that will support their growth (in a multitude of ways) while the infographic results provide them with reference regional statistics when negotiating, looking for a new job, or creating change within their current office.

CONGRATULATIONS to WMAIA Firms who achieved this distinction in 2023:

BERKSHIRE DESIGN, Pittsfield

BRADLEY ARCHITECTS, Pittsfield

DIETZ & COMPANY ARCHITECTS, Springfield

KUHN RIDDLE ARCHITECTS, Amherst



New England AIA Components  
**Emerging Professional  
Friendly Firm**

COMMERCIAL & RESIDENTIAL WINDOW SOLUTIONS



- Initial project and product application consultation
- Assistance with Green Building requirements and LEED® Certification
- Custom product and installation design
- 2-D (CAD) details and 3-D (BIM) models for Pella® Products
- Professional installation and shop drawings
- "Mobile Showroom" samples/demos available
- Pella + Purpose CEU program



SUPPORTING ARCHITECTS OF WESTERN MASSACHUSETTS



**OTO**

SERVING NEW ENGLAND AND BEYOND FOR  
OVER 25 YEARS, AND PROUD TO ANNOUNCE OUR  
NEW STATUS AS A MASSACHUSETTS CERTIFIED  
WOMEN BUSINESS ENTERPRISE



Collaborating with Design and Construction teams, OTO provides

- Environmental Due Dilligence Studies
- Geotechnical Studies and Assessments
- Civil Engineering Support
- Pre-Renovation Hazardous Materials Assessment and Testing
- MCP Compliance and LSP Services
- Construction Support and Oversight
- LEEDS and IBC Indoor Air Quality Testing
- and more.

HELLO@OTO-ENV.COM  
413 . 788 . 6222  
WWW.OTO-ENV.COM

Industrial Hygiene | Geotechnical | Environmental

DO YOU HAVE A PROJECT WE COULD FEATURE?  
EMAIL [EDITOR@WMAIA.ORG](mailto:EDITOR@WMAIA.ORG)



# FEATURED ARTISAN

## GILL CC WOODWORKS

### How do you work on your craft within the Western Massachusetts community?

My craft spans a wide range of clients, businesses and people, which is one of the things that drives my inspiration. The grass roots support of our local community is an integral part in what makes this business possible - from family and friends to clients who become return clients and then friends, I'm grateful to be able to call this my job. I often get clients who call with a beloved Massive Walnut tree and want it taken down in a way that preserves as much of the usable wood as possible. I work with Nartowicz Tree Service to safely remove the tree with a crane in order to harvest as much length as possible.

I also work with local institutions to build pieces entirely out of wood harvested on their campus. Working with Maya Lin and Smith College is such a great honor. Smith College contacted me to turn the slabs harvested from an Elm tree that had to be taken down to make room for the addition to the Neilson Library that Maya was to design. Working with Maya, we created three massive live edge reading tables around 12' long by around 5' wide. The collaboration also included benches sprinkled throughout the library with turned legs and mortise and tenon construction, fastened with split wedges. We also created three coffee tables made of massive cookie slabs (end grain slabs) cut from the base of the massive tree.

### How does sustainability play a role in your business?

Sustainability is at the heart of what I do. The massive influence of my father, Dick French of *French and Ball Mill Work*, has instilled the deepest appreciation for the conservation and preservation of land. This draws a direct parallel with the preservation of the knowledge, skills, and the customs of trades that were often passed down from generation to generation. I am fortunate to get to be part of this passing on of knowledge and skills in what is becoming an old fashioned way of life. My philosophy is "From Tree to Heirloom".

From these roots I source all my materials from either salvaged trees from tree companies or from our own tree farm using trees that had to be taken out for thinning or realising crop trees or trees that were damaged or compromised. I curate a massive inventory of sustainably harvested "flitches" or "boules". These are stacks which are arranged as they were sawn. These trees are then turned into tables, bars, desks for businesses, personal spaces and everything in between.

### What's your favorite part of your creative process? Can you describe your process?

My favorite part of my creative process is the beginning of a new project, a blank slate: learning about a new client and the project scope. I often think of myself more of a sculptor than a woodworker; working with the wood from the raw tree to the finished product. Breaking down the whole tree into slabs or board on the mill. Then waiting for the perfect project for the wood to be celebrated and turned into functional art. I try to have as much of a hands off approach as possible in my designs, allowing the wood to speak for itself, allowing nature to speak for herself. I start with the function of the design. Next I move onto the aesthetics, the tones of the space, the lighting, the size of the space, the clients taste and influences. Getting to see how the wood has dried, moved, the colors it has turned, remembering the story of the tree. Getting to write a whole new chapter for it. Then follow the rough milling of the lumber and the critical step of acclimating where the lumber is left to rest and then remilled once it has released tension and acclimated to the working environment of the shop. Then joinery layout, cutting the joinery and then finally the assembly. Lastly the finish - I tend towards hand rubbed finished such as Waterlox (tung oil varnish) or Rubio Monocoat (hard wax oil). These finishes (among others) lend themselves to the intimate connection between the recipient of a piece and the piece itself. The last step is the delivery. The new pieces grace the new space, its new forever home. The reward is great when the labor is done out of love.



11

GILL CC WOODWORKS: GILL, MASS  
OWNER SAM FRENCH  
www.gillccwoodworks.com

# FEATURED ARTISAN

## GILL CC WOODWORKS



PHOTOS: Kim Linder / Time Bandit Photography

WOULD YOU LIKE TO NOMINATE SOMEONE AS A FEATURED ARTISAN?  
EMAIL EDITOR@WMAIA.ORG

12





©2023 Marvin Lumber and Cedar Co., LLC.



# Make space for original thinking.

You listen. You imagine. Then, you lead the way to bring it all to life. At Marvin, we understand what comes with “custom.” That’s why you’ll find more than high-quality windows and doors with us. You’ll meet seasoned experts with unwavering ingenuity to help you make space for what matters—discerning details, uncompromising quality, and creating more one-of-a-kind designs.

[marvin.com/architectural-resources](https://marvin.com/architectural-resources)



# Build your legacy with Keiter

Our passion is to help our clients build the integral foundations of their legacy.

► [LEARN MORE AT KEITER.COM](https://www.keiten.com)



**ENGINEERING VENTURES PC**

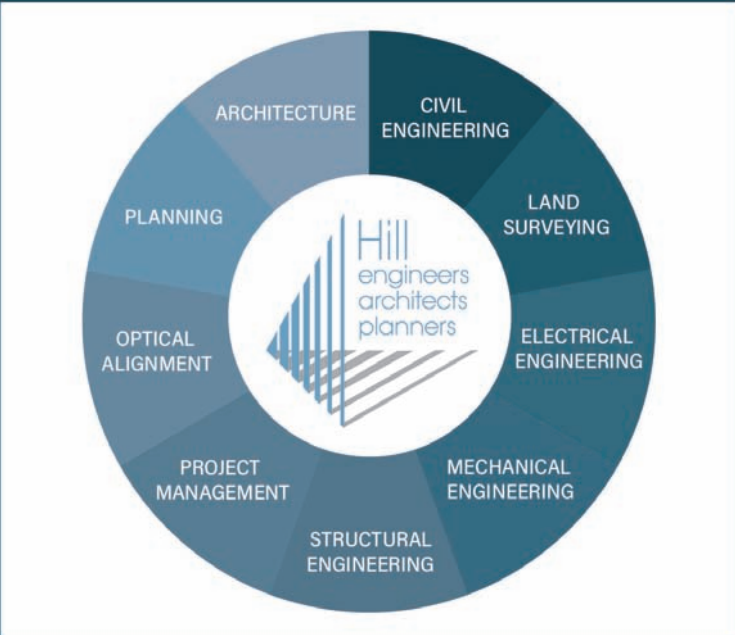
Serving New York & New England

Camp Becket Dining Hall, Becket, MA

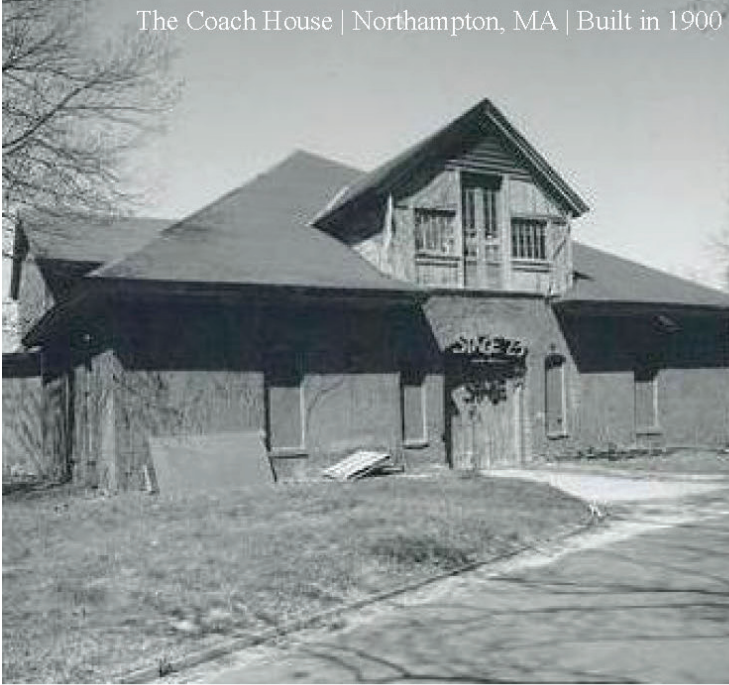
Creative Civil & Structural Engineering Solutions

(518) 205-9141 | [www.engineeringventures.com](https://www.engineeringventures.com)

# Hill-Engineers, Architects, Planners, Inc.



[Hillengineers.com](https://hillengineers.com)  
413.684.0925 – 50 Depot St. Dalton, MA. 01226



Building History Since 1897

[www.dasullivan.com](https://www.dasullivan.com) | 413-584-0310

Follow us online:

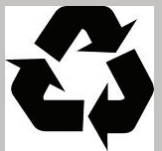




# Western Massachusetts newsletter

71 SOUTH MAIN STREET SUNDERLAND MASSACHUSETTS 01375

Prsrt Std  
US Postage  
PAID  
Permit 183  
Greenfield MA



## WMAIA COMMUNITY NEWS

### THE FALL BCT LECTURE SERIES WRAPS UP WITH:

#### ***Building a Greener Future:***

#### ***Mercy Corps' Global Sustainability Efforts***

Monday November 6 | 4:00-5:15PM

Hybrid – ZOOM or in person at

170 Design Building UMass | 1 HSW

#### ***Climate-smart construction:***

#### ***Plant-based Prefab as a Carbon Drawdown Solution***

Monday November 27 | 4:00-5:15PM

Hybrid – ZOOM or in person at

170 Design Building UMass | 1 HSW

### WMAIA WOMEN IN ARCHITECTURE:

#### ***Women, Gender and Architecture in Denmark:***

#### ***A Panel Discussion***

Friday November 10 | Noon | In person

1 LU approval pending

This UMass Program is supported in part by WMAIA Women in Architecture. WMAIA's Women in Architecture Programs are Sponsored by



### THE FALL FILM SERIES WRAPS UP WITH:

#### ***MODULAR and MASS CUSTOMIZED HOMES:***

#### ***Ray Kappe: California Modern Master,***

#### ***Forty Years of Modular Evolution***

#### ***KieranTimberlake: Loblolly House and Cellophane House***

Wednesday October 25 6:30 PM | ZOOM

1 HSW approval pending

#### ***ART & ARCHITECTURE:***

#### ***Ellsworth Kelly & Jack Shear:***

#### ***Kindred Aesthetics, Mt. Lebanon Shaker Village***

#### ***Sol LeWitt: Wall Drawings***

Wednesday November 8 6:30 PM | ZOOM

1 LU approval pending

#### ***December – date tbd – WMAIA Annual Meeting including a special Green Giants presentation.***

Stay tuned for more info!

More information about WMAIA programs can be found on our website and our enews updates.

Not receiving the enews?

Contact [director@wmaia.org](mailto:director@wmaia.org) to make sure we have your current email address.

KEEP AN EYE OUT FOR THE UPCOMING AIA MA STRETCH CODE SURVEY. YOUR OPINION MATTERS.  
PLEASE COMPLETE AND RETURN THE SURVEY.