

WM | AIA



NEWSLETTER

PAMELA SANDLER ARCHITECT
8 RESIDENCE
GREAT BARRINGTON MASSACHUSETTS

SUMMER
2022

AIA NATIONAL : CHICAGO 2022



This year the AIA held the first in-person National Conference since the start of the pandemic. The Conference took place in Chicago from June 22nd through 25th; four days full of keynotes, seminars, tours, practicums, and a massive expo floor. WMAIA was represented at the conference by a strong contingent of members, including myself, Kristian Whitsett AIA, Helen Fantini AIA, Margo Jones FAIA, Tom Hartman AIA, and Wendy Brown AIA (sorry if I missed anyone).

As President, I represented WMAIA at the Annual Meeting. The AIA Annual Meeting, which is usually held at the annual conference, was held on-line the week before the conference in a nod to the still present COVID pandemic. All the members running for positions at the national level were impressive, each of them representing a meaningful vision of the future of the AIA. Only one of the issues decided in the general meeting was a contentions race: a change to the bylaws allowing the AIA or members to endorse “any material of construction”. I interpret this as an effort to create an additional revenue stream for the organization, but at a risk to the reputation of the AIA. The bylaw change barely passed, so we may start to see official endorsements or strategic partnerships from the AIA.

The Conference was a clear effort to get “back to normal”- enormous rooms packed with excited architects listening to keynotes and presentations, running the sales gauntlet of the expo floor, and chatting in the massive corridors of the McCormick Center. The conference organizers were vigilant in requiring full vaccinations for all attendees, but otherwise there was very little evidence of the pandemic, except for the positive test that awaited my return home. A subsequent email from the event organizers suggests I was not the only one to catch the virus at the event.

The new CEO of the AIA, Lakisha Woods, was a constant presence on the keynote stage, representing herself as a strong and energetic leader who is excited to move the AIA forward in its goals. The most commonly referenced themes throughout the conference were Climate, Diversity Equity and Inclusion, and an overall intent to make the world a better place through Architecture. Through awards and presentations we saw some amazing work that is being done to increase representation and include traditionally under or un-represented groups in architecture. Whitney F. Young Jr. Award winners RIDING THE VORTEX are a particularly impressive and inspiring group really doing the work that is so often talked about.

The AIA is clearly focused on the climate emergency, with a number of sessions addressing sustainability and reducing the impact of the built environment. In spite of this clear intent, much of the Architecture presented revealed we are still in an era of fossil fuel powered glass boxes with complex facades, inconsistent with our carbon goals. As we continue to learn and understand more of this complex issue, I hope to see more sustainable development throughout our industry in the coming years.

The conference had a number of seminars and practicums on a vast swath of topics. WMAIA Architect Margo Jones FAIA presented a daylighting seminar, which was said to be one of the best seminars of the conference. Another very moving seminar highlighted the use of forced labor in construction and building products -- it turns out we have a real problem. Regional organization Grace Farms of New Canaan, CT is spearheading Design for Freedom, a movement to help remove the use of forced labor in building projects. They have a comprehensive Toolkit to support the industry, look it up on the web for more info.

In addition to the scheduled conference events, Chicago was a great host city with lots of famous architecture to see, and fortunately great weather to take advantage of. The city has a convenient bike rental network that allowed Kristian Whitsett and me to see some highlights, and explore the surprisingly tropical coastline (at least when the weather is sunny and 90°). The city was busy and vibrant at all times, and according to the AIA Guide to Chicago, nearly every building is notable.

The conference wrapped up with a keynote conversation between President Barack Obama and AIA President Dan Hart. The conversation was a highlight of the conference, covering topics from Obama’s experience as a client for the Presidential Library with Billie Tsien and Tod Williams, to his take on the current state of our society and culture. My takeaway from the candid conversation was that our intentions must remain genuine and positive, even when the events around us seem beyond our control. He recounted a story about printing stickers that said, “Don’t Be Cynical,” and sticking them on things throughout the Whitehouse as a constant reminder to himself and his staff. Some good advice for all of us.

Garth Schwellenbach AIA

WMAIA President



IN THIS ISSUE:

- ONE** AIA NATIONAL: CHICAGO 2022
- TWO** COVER STORY: PAM SANDLER AIA BUILDS HER DREAM HOUSE
- THREE TO FIVE** UMASS THESIS PROJECTS 2022
- SIX TO EIGHT** FIVE COLLEGE STUDENT WORK
- TEN** CONGRATULATIONS TO WAYNE FEIDEN
- TWELVE** THINGS TO DO + SEE IN WESTERN MASSACHUSETTS
- THIRTEEN + FOURTEEN** FEATURED ARTISAN: THE WESTONE COMPANY
- FIFTEEN** WMAIA PROGRAMS

THE WESTERN MASSACHUSETTS CHAPTER OF THE AMERICAN INSTITUTE OF ARCHITECTS

THE WMAIA NEWSLETTER IS PUBLISHED FOUR TIMES A YEAR. IT IS CIRCULATED TO ALL MEMBERS, ADVERTISERS AND SUBSCRIBERS.

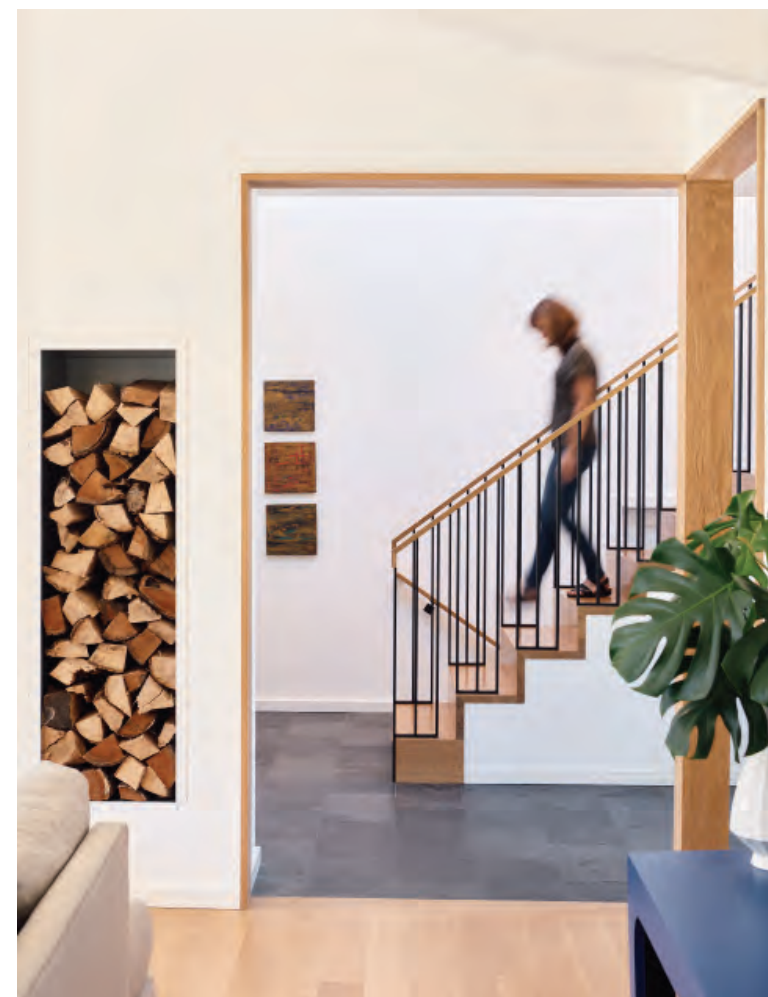
PLEASE DIRECT ALL NEWSLETTER CORRESPONDENCE TO RACHAEL CHASE, AT EDITOR@WMAIA.ORG.

ARTICLES, PHOTOS, NOTICES OF EVENTS AND OTHER INFORMATION ARE WELCOME.

OPINIONS EXPRESSED IN THE NEWSLETTER ARE NOT NECESSARILY THOSE OF THE WMAIA.

THE EDITOR RESERVES THE RIGHT TO REJECT OR REVISE MATERIAL AS SPACE AND SUBJECTIVE OPINION PERMIT.

COVER STORY



Pam Sandler AIA, owner and principal of Pamela Sandler Architect, LLC in Stockbridge Massachusetts for the past 33 years, designed and built her dream home with an all-women team during the height of the pandemic.

Built in 1960, the original home was only 960 square feet but had a number of interesting architectural elements. Sandler and her team gut-renovated and expanded the space to 1700 square feet; her architectural design allowed the home to maintain the spirit of its mid-century modern origins, while enhancing its connection with the natural environment and incorporating green design elements.

The home is set atop a hill overlooking the beautiful Green River, rolling fields, and rustic farmland. Despite the intimacy of its location, Sandler’s new home is also just a stone’s throw from town, and some of Berkshire County’s best dining and cultural spots.

PHOTOS: John Gruen

DO YOU HAVE A COVER STORY?

EMAIL EDITOR@WMAIA.ORG

WMAIA

EXECUTIVE COMMITTEE

PRESIDENT:

GARTH SCHWELLENBACH AIA

PRESIDENT ELECT:

KERRY BARTINI AIA

TREASURER:

GARRISON PIERS-GAMBLE ASSOCIATE AIA

SECRETARY:

CARYN BRAUSE FAIA

PAST PRESIDENT:

J. KRISTIAN WHITSETT AIA

MEMBERS:

LEAHNA AGUSTIN AIAS

JODY BARKER AIA

HELEN FANTINI AIA

MOHAMED IBRAHIM ASSOCIATE AIA

MY-RON HATCHETT AIA

LUDMILLA PAVLOVA AIA

STEPHEN SCHREIBER FAIA

EXECUTIVE DIRECTOR:

LORIN STARR

NEWSLETTER EDITOR:

RACHAEL CHASE

EMERGING PROFESSIONALS

COORDINATOR

GARRISON PIERS-GAMBLE ASSOCIATE AIA

ARCHITECT LICENSING ADVISOR

KERRY BARTINI AIA

WEBSITE MANAGER

JULIE WAGGONER HON. WMAIA

SOCIAL MEDIA

LEAHNA AGUSTIN AIAS

FILM SERIES

ANDREW BAGGE AIA

DISASTER ASSISTANCE COORDINATOR

LUDMILLA PAVLOVA AIA

COTE COMMITTEE CO-CHAIRS

LAURA FITCH AIA

AELAN TIERNEY AIA

CONGRATULATIONS UMASS
M.ARCH STUDENTS!

Department of Architecture
at the University of Massachusetts Amherst

MOLLY RENAUD CLARK

Thesis Advisor: Jordan Kanter

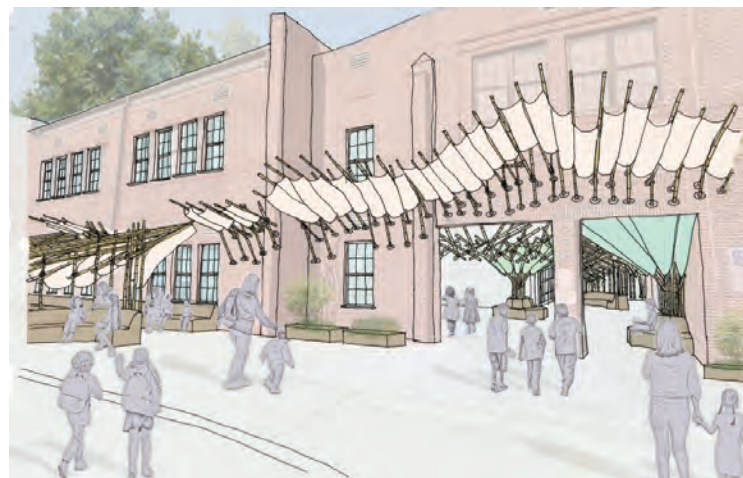
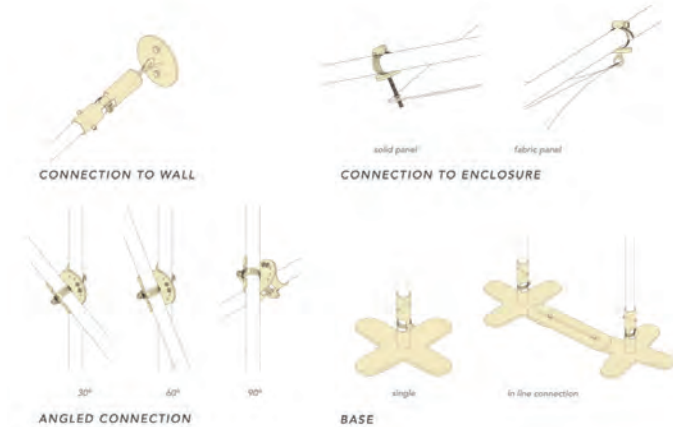
EQUITABLE HOUSING THROUGH ALGORITHMS



MEGAN FUTSCHER

Thesis Advisor: Rob Williams AIA

APPROACH TO UTILIZING LOCAL BAMBOO FOR COVID



MICHAELA GOODRICH

Thesis Advisor: Erika Zekos Associate AIA

ARCHITECTURAL ACTIVISM THROUGH HIP-HOP



CONGRATULATIONS UMASS
M.ARCH STUDENTS!

Department of Architecture
at the University of Massachusetts Amherst

MEGAN ITZKOWITZ

Thesis Advisor: Sandy Litchfield Associate AIA

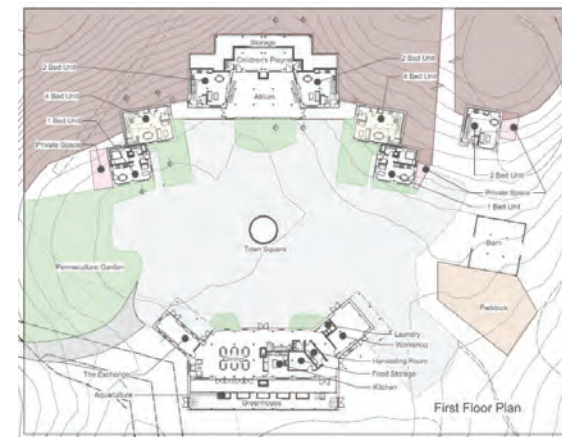
ADDRESSING TRAUMA THROUGH ARCHITECTURE: CULTIVATING WELL-BEING FOR YOUTH WHO HAVE EXPERIENCED TRAUMA



SARAH MALLIO

Thesis Advisor: Ray Kinoshita Mann AIA

BUILDINGS INTEGRATED INTO THE LAND ECOLOGY & HOW TO MAKE PEOPLE CARE FOR THEM



OBED OTABIL

Thesis Advisor: Stephen Schreiber FAIA

PREFABRICATED HOME: DELIVERY AT YOUR DOORSTEPS



Every year, we feature the MArch Thesis Projects from UMass Amherst in the Summer Issue of the WMAIA Newsletter, as a celebration of the architectural education happening in Western Massachusetts. We want to acknowledge the students, the thesis advisors and faculty, as well as the many community members who serve as outside jurors during the Spring semester - thank you!

CAMI QUINTEROS

Thesis Advisor: Pari Riahi AIA

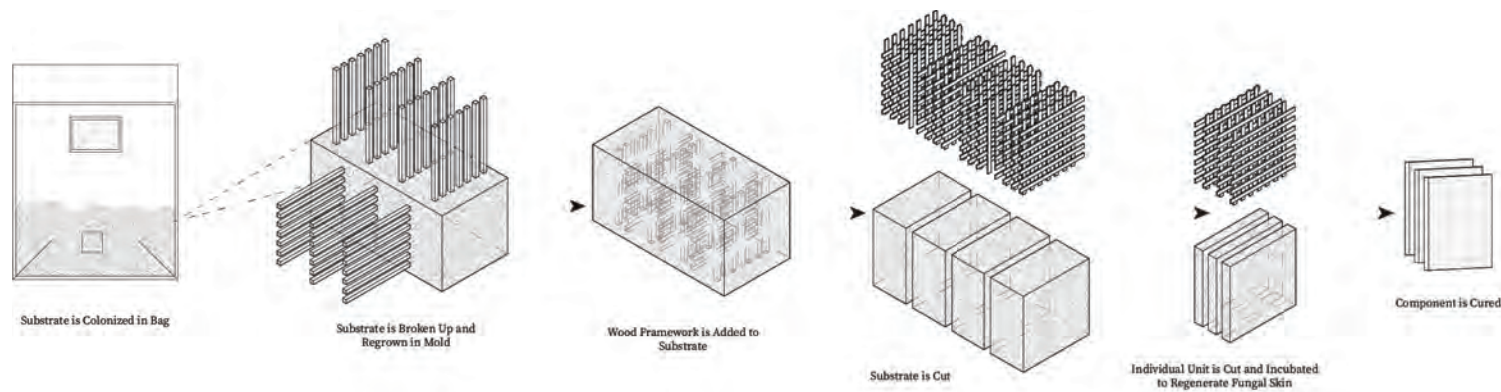
MEMORY AND RESISTANCE



CARLY REGALADO

Thesis Advisor: Ray Kinoshita Mann AIA

THE BUILDING BLOCKS OF NATURE AND THE NATURE OF ARCHITECTURE



ALEX STOICHEFF

Thesis Advisor: Pari Riahi AIA

IN-BETWEEN SPACES: ATMOPHERES, MOVEMENT, AND NEW NARRATIVES FOR THE CITY

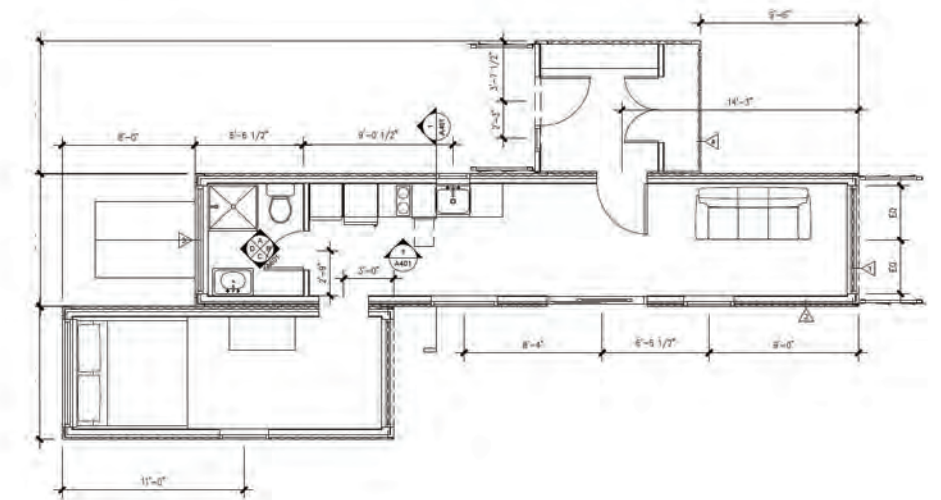


SHIPPING CONTAINER HOUSING

PROFESSOR ROB WILLIAMS AIA

This class was the design phase of a design-build collaboration with Yestermorrow Design/Build School in Vermont. Students were challenged to collaboratively design an energy efficient, adaptable, and affordable dwelling unit around a single 40-foot shipping container. The students' design is currently under construction at Yestermorrow.

FLOOR PLAN EXPANSION:



GRADUATE DESIGN IV

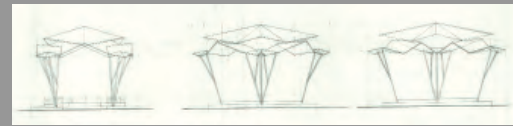
PROFESSOR ROB WILLIAMS AIA

This past spring, graduate students in Grad Design IV worked with representatives from the US State Department Overseas Building Operations department to design a new office building for the US Mission to the United Nations in Geneva. Students were challenged to integrate complex programmatic requirements for this unique building type with innovative facade treatments. Student teams will continue to develop their projects this upcoming semester in the Integration Studio.



STUDENT WORK 2022

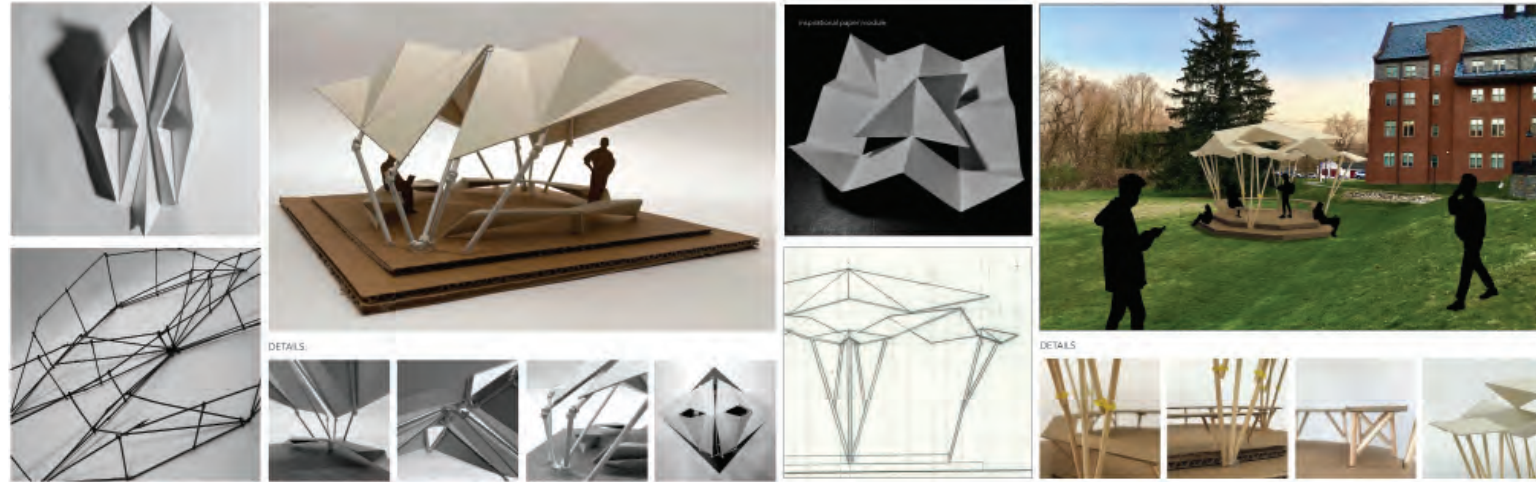
MOUNT HOLYOKE COLLEGE



DESIGN FOUNDATIONS

PROFESSOR NAOMI DARLING AIA
WITH TALINH MAI

PROJECT PROGRAM: AN OUTDOOR CLASSROOM AT MOUNT HOLYOKE COLLEGE



WORK BY MICAH C HELLER

WORK BY ISABEL COLINA

MAKERSPACE STUDIO AT FIMBEL

PROFESSOR NAOMI DARLING AIA

PROJECT PROGRAM: DESIGN + BUILD A STORAGE WALL FOR FIMBEL MAKER & INNOVATION LAB



IN PHOTO: Susannah Auderset, Hannah Berry, Ilse Hill, Joan Kang, Addi Kessler, Aigerim Khamar, Linh Mai, Gladys Mbugua, Fiona Milton, Erin Schrama, Sarannya Sharma, Nana Aba Turkson, with Professor Naomi Darling AIA, Kris Camp, Technical Director of Fimbel Maker & Innovation Lab, and TA Maitlyn Lang.

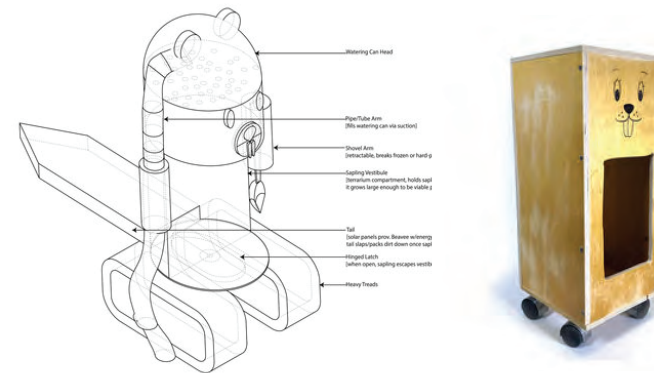
STUDENT WORK 2022

SMITH COLLEGE

BEAVER CENTERED DESIGN

PROFESSOR ROSA WEINBERG

Beaver Centered Design (BCD) was a six-week project that introduced architecture students to a new way of looking at the relationship between the human and non-human world. BCD is both a critique of Human-Centered Design—which sometimes ignores the natural world—and how architecture is taught—which often ignores humans. This was the first project for the advanced architecture studio at Smith College in the Spring of 2022. Students, in teams of two, were asked to design and fabricate a device or installation that responded to the needs of beavers.



DAS

Building History Since 1897

www.dasullivan.com | 413-584-0310

Follow us online:

**mica
blue**
CREATIVE

Julie Waggoner
Affiliate WMAIA
jwaggoner@micablue.com
413-665-2280

Graphic Design
Web Design
Copy Writing
Photography



Low Embodied Carbon,
Net Zero and
Sustainable Construction

413.586.8287
wright-builders.com
Northampton, MA

**ENGINEERING
VENTURES PC**

Vermont · New Hampshire · New York
*Creative Civil & Structural
Engineering Solutions*
www.engineeringventures.com

**WAYNE FEIDEN RETIRES AFTER 33 YEARS
CONGRATULATIONS!**

WMAIA offers heartfelt congratulations to Wayne Feiden, FAICP, Hon WMAIA on his retirement from his position as Director Planning & Sustainability for the City of Northampton, where he worked for 33 years. His myriad accomplishments include more affordable housing and more protected open space. Wayne was one of our first Hon WMAIA recipients, awarded in 2010.

Wayne has long been a champion of the importance of collaboration between architects and planners and is responsible for the close collaboration between WMAIA and the City of Northampton. He was the force behind the two SDATs we hosted in Northampton and he spearheaded WMAIA's two major public outreach programs: 2013's small lot I BIG IDEAS, a design competition that encouraged architects to offer ideas that would "energize" existing neighborhoods and illustrate the impact of a new Northampton zoning law; and 2018's Just Big Enough, a design competition that highlighted opportunities for very small very green housing that is affordable to people often left out of the green housing market. The competition was based on a real city-owned site in Northampton and provided parameters for energy performance and cost containment.

In addition to participation in our local chapter, Wayne worked with AIA National and offered his planning expertise as a member of 34 AIA design assistance projects teams – 30 in the United States and four abroad.

We wish Wayne well in his retirement and are glad to note that his Hon WMAIA membership continues. We hope his participation in the chapter does as well!

(For more info on Wayne's long career with the City of Northampton, see <https://www.gazettenet.com/Wayne-Feiden-to-retire-as-Northampton-planning-and-sustainability-director-46513347>)



**ART
Engineering**
we build the future.

38 Front Street FL 3 Worcester, MA 01608
t. 508-797-0333 f. 508-797-5130

OTO

Collaborating with Design and Construction teams, OTO provides

- Environmental Due Dilligence Studies
- Geotechnical Studies and Assessments
- Civil Engineering Support
- Pre-Renovation Hazardous Materials Assessment and Testing
- MCP Compliance and LSP Services
- Construction Support and Oversight
- LEEDS and IBC Indoor Air Quality Testing
- and more.

Industrial Hygiene | Geotechnical | Environmental

HELLO@OTO-ENV.COM
413.788.6222
WWW.OTO-ENV.COM

WBE

SERVING NEW ENGLAND AND BEYOND FOR OVER 25 YEARS, AND PROUD TO ANNOUNCE OUR NEW STATUS AS A MASSACHUSETTS CERTIFIED WOMEN BUSINESS ENTERPRISE

Pella

Supporting the Architectural Community

Mary Lynn Hadix
Architectural Consultant
413.824.2422
mhadix@pellasales.com

VIEWED TO BE THE BEST.®

KEITER
Develop | Build | Manage

Build your legacy with Keiter

Our passion is to help our clients build the integral foundations of their legacy.

▶ LEARN MORE AT KEITER.COM



Redefine indoor spaces.

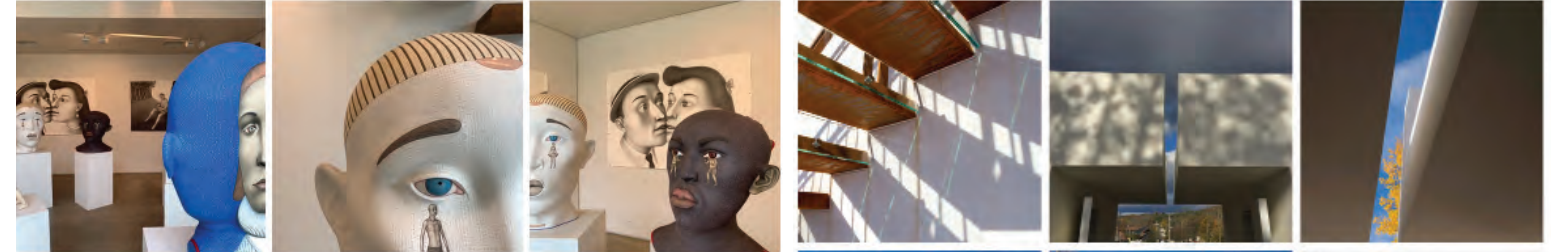
Meet the award-winning Marvin Skycove. A people-first, innovative solution that promotes healthy living and delivers remarkable design possibilities. With panoramic views, narrow sightlines, and immersive engagement with the outdoors, let this statement piece speak for itself.

Contact your Marvin representative to demonstrate why Skycove can help you push the boundaries of architectural design without sacrificing safety or performance.

MARVIN 

Ben Guilmette
802-233-4754
benguilmette@marvin.com

THINGS TO DO + SEE IN WESTERN MASSACHUSETTS



An exhibit presents Sergei Isupov's graphite drawings, ceramic sculptures, and a large-scale outdoor piece showing various ways in which the artist resolves the tension of **Proximal Duality**

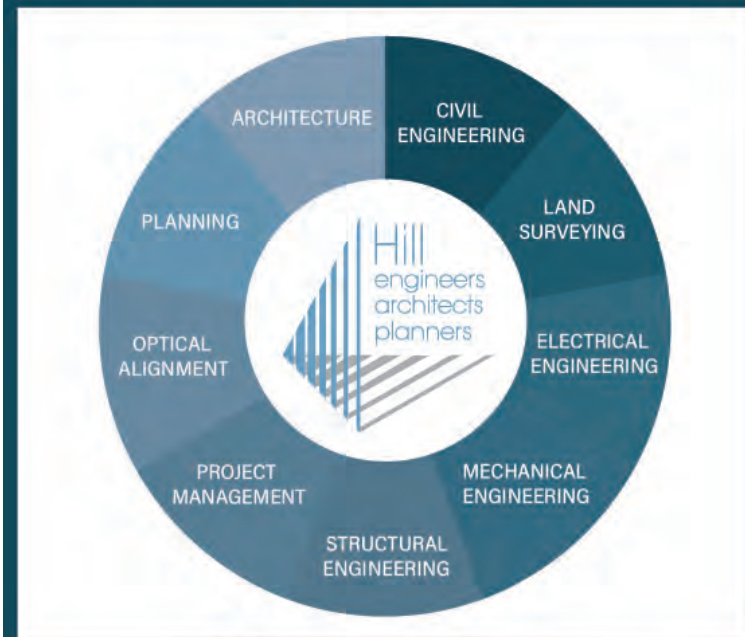


Wandering Stones commemorates the life and work of Alexander Konstantinov, TurnPark Art Space's primary architect, who passed away unexpectedly in 2019.



TurnPark Art Space combines a sculpture park, exhibition venues, and a stone amphitheater for outdoor performances. Conceived and founded by Igor Gomberg and Katya Brezgunova as an art space and a place for exploration for both children and adults, the park showcases contemporary architecture and sculpture at the foot of the Berkshire Mountains. Situated on 16-acres of a former quarry in the town of West Stockbridge, Massachusetts, TurnPark boasts a unique and diverse landscape. There are hills, meadows, a lake, and a 65-foot vertical drop offering breath-taking views of the surrounding landscape.

Hill-Engineers, Architects, Planners, Inc.



Hillengineers.com

413.684.0925 - 50 Depot St. Dalton, MA. 01226



FEATURED ARTISAN

THE WESTONE COMPANY

NORTHAMPTON MA

How do you work on your craft within the Western Massachusetts community?

My initial interest in stone was prompted by my exposure to some of our locally quarried stones. Though I didn't realize it at the time, building a connection to "local" has been a key component to our success here in Western Massachusetts and throughout the Northeast. We are fortunate to have unique and beautiful stones quarried here in New England. The Western Mass market, clients, architects and builders support buying local and keeping the work in the community. Our focus and strength as a specialized stone fabricator is in the craft of the work and having collaborative relationships. We run a small business so that we can focus on each project and work closely with the team.

How does sustainability play a role in your business?

Like most stone shops, we re-cycle water for the cutting and some of the polishing process. Being a small shop, we avoid generating waste as smaller remnants of stone are useful to someone for a vanity or other small surface. We also use cutoffs in a garden at the shop to help keep the weeds in-check. What waste is left over, we take to a local stone processing plant where it is crushed and used as an aggregate for paving or clean fill. Most of the adhesive products we use in the installation process are Greenguard certified.

Is there a way in which you would like to work with local architects and designers that hasn't happened yet?

Over the years, we have developed strong relationships with many architects both locally and regionally. Projects with architects and designers have clarity and make better use of materials and color/stone choices. Assisting and participating at ABX with Ashfield Stone has been rewarding. I would like to develop a "lunch and learn" program wherein I could introduce local stone and discuss successful collaborations. The drawings needed, what we can bring to the process to support the architects, designers, and builders. There are many firms in New England that are unaware of the locally quarried stones.

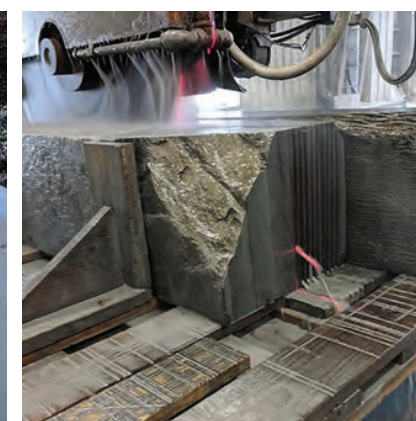
What's your favorite part of your creative process? Can you describe your process?

As fabricators, we specialize in creating solutions using stone for architecture, primarily for the interior of buildings. We begin with a collaborative meeting to consider the designers/architects and owners goals and vision. Unresolved details and challenges are worked through. Our strength is collaborating – not rushing the process.



FEATURED ARTISAN

SPECIALIZED STONE FABRICATORS AND INSTALLERS



71 SOUTH MAIN STREET SUNDERLAND MASSACHUSETTS 01375



WMAIA COMMUNITY
SUMMER 2022

**WMAIA programs will resume in September.
We expect a mix of in-person and virtual offerings this fall.**

**This is a Design Awards year for our chapter.
A call for entries will be released in September with project submissions due in mid-October.
Awards will be presented at our Annual Meeting in December.**

Enjoy the rest of the summer!