

WM | AIA



N
E
W
S
L
E
T
T
E
R

BURR AND McCALLUM ARCHITECTS
BERKSHIRES HOUSE XIII
WEST STOCKBRIDGE, MASSACHUSETTS

FALL
2014

TRIS METCALF AIA WINS wins International Design Award for ion propulsion project; 'sky suits' would allow people to fly

WMAIA member architect Tristram W. Metcalfe III and a fellow scientist-inventor were awarded a silver medal from the International Design Awards for their Atmospheric Ion Propulsion Project. The project includes "sky suits" that, when donned, would allow people to fly. You can read more about this on masslive.com (search Metcalfe Award). We asked Tris to provide some more details:

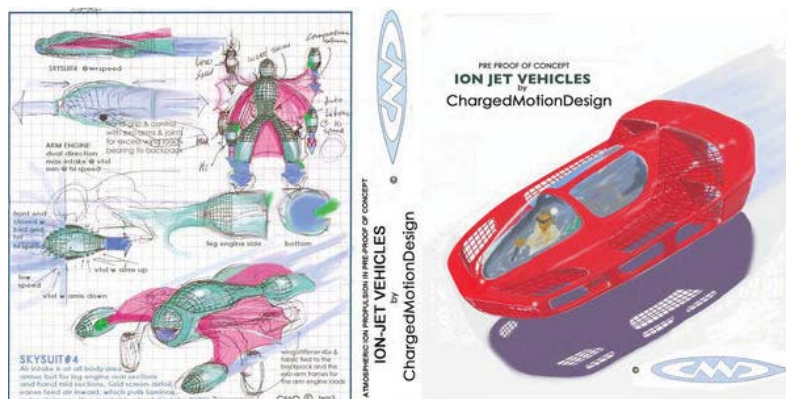
To really understand the technical potential one must visit our website charged-motion.com now in beta testing where we show both the strong potential of how it will work and the benefits it will bring to civilization. The published article emphasized the sky suit - which would be a lot of fun to have - but it is the I-Jet that is the real story here.

Computer simulations have shown that our patented breakthrough in "Atmospheric Ion Propulsion" (AIP) will result in a transportation system that can be used by anyone at any age. This is an old technology first patented by Dr Robert Goddard and although it has been used successfully in the vacuum of space, it has found no success in the atmosphere - until my my partner Dr. Cardwell found a way around a "brickwall" that has forever kept it useless and misunderstood in the Earth's atmosphere.

This transport technology will enable travel 10 times faster than an automobile or get 10 times the gas mileage.

It emits no pollution, as it uses solar hydrogen fuel cells, and will not require a pilot's license because the vehicle navigates itself. It uses an electro static force field that drives charged air through a no moving parts jet engine for the needed reaction thrust propulsion.

When fully adopted it could save the lives of the one million people who die in traffic related accidents each year as well as the one billion animals killed on the highways. It will greatly reduce travel time increasing connections the world over - with door to door quick access that will open up markets from and to people world wide, since it requires no ground infrastructure apart from hydrogen refueling stations hundreds to thousands of miles apart.



HOW VERTICLE FLIGHT TRANSPORTATION WILL IMPROVE URBANISM



IN THIS ISSUE

ONE SKY SUITS WITH TRIS METCALFE AIA

THREE + FOUR TRAVEL PHOTOS: PARIS + BARCELONA

FIVE + SIX NCARB GRANT: VOICES FROM THE FIELD

SEVEN WMAIA'S CLARK MUSEUM TOUR

EIGHT CONNECTING TO CRAFT

NINE + TEN THINGS TO DO + SEE IN WESTERN MASSACHUSETTS

ELEVEN + TWELVE FEATURED ARTISAN: JOHN F. GRANNEY METALWORK

THIRTEEN + FOURTEEN BEFORE + AFTER: KUHN RIDDLE ARCHITECTS

FIFTEEN WMAIA PROGRAMS

THE WESTERN MASSACHUSETTS CHAPTER OF THE AMERICAN INSTITUTE OF ARCHITECTS

THE WMAIA NEWSLETTER IS PUBLISHED FOUR TIMES A YEAR.

IT IS CIRCULATED TO ALL MEMBERS, ADVERTISERS AND SUBSCRIBERS.

PLEASE DIRECT ALL NEWSLETTER CORRESPONDENCE TO

RACHAEL CHASE ASSOCIATE AIA, AT EDITOR@WMAIA.ORG

ARTICLES, PHOTOS, NOTICES OF EVENTS AND OTHER INFORMATION ARE WELCOME.

OPINIONS EXPRESSED IN THE NEWSLETTER ARE NOT NECESSARILY THOSE OF THE WMAIA.

THE EDITOR RESERVES THE RIGHT TO REJECT OR REVISE MATERIAL AS SPACE AND SUBJECTIVE OPINION PERMIT.

COVER PHOTO: MICHAEL LAVIN FLOWER

WMAIA NEWS

JASON PETTIGREW AWARDED TO JASON NEWMAN, ASSOCIATE AIA

Congratulations to Jason Newman Associate AIA of Dietz & Company Architects, and one of WMAIA's IDP Coordinators for bringing home the Jason Pettigrew Award for achievement and all around excellence by an intern architect. The American Institute of Architects selected ten recipients to receive the 2014 Jason Pettigrew Memorial ARE Scholarship.

The recipients will receive compensation for the entire cost of the Architect Registration Examination (ARE) and a full set of study guides provided by Kaplan Architecture Education.



Jason Newman,
Associate AIA

WMAIA

EXECUTIVE COMMITTEE

PRESIDENT:

CHRISTOPHER FARLEY AIA

PRESIDENT ELECT:

HELEN FANTINI AIA

TREASURER:

THOMAS RC HARTMAN AIA

SECRETARY:

LUDMILLA PAVLOVA AIA

PAST PRESIDENT:

JEREMY TOAL AIA

MEMBERS:

CAREY CLOUSE AIA

ROBERT HARRISON AIA

DOUG MARSHALL AIA

MARTHA MONTGOMERY AIA

NAYEF MUDAWAR AIAS

STEPHEN SCHREIBER FAIA

JULIE WAGGONER ASSOCIATE AIA

EXECUTIVE DIRECTOR:

LORIN STARR AFFILIATE WMAIA

NEWSLETTER EDITOR:

RACHAEL CHASE ASSOCIATE AIA

EMERGING PROFESSIONALS

COORDINATOR

DORRIE BROOKS ASSOCIATE AIA

IDP COORDINATORS

JASON NEWMAN ASSOCIATE AIA

LINDSAY SCHNARR ASSOCIATE AIA

WEBSITE MANAGER

JULIE WAGGONER ASSOCIATE AIA

SOCIAL MEDIA

RACHEL BEESEN AIAS

FILM SERIES

ANDY GROGAN ASSOCIATE AIA

DISASTER ASSISTANCE COORDINATOR

JOHN ROBINSON AIA

TRAVEL PHOTOS: PARIS 2014

DEREK NOBLE + ERIKA ZEKOS

This summer we took a 10-day family trip to Paris and Barcelona where we explored a mix of contemporary and classic sites from the architectural canon. Here are a few photos from Paris: Catedral de Notre Dame, Centre Georges Pompidou (Rogers and Piano), Musee de quai Branly (Jean Nouvel)



TRAVEL PHOTOS: BARCELONA 2014

DEREK NOBLE + ERIKA ZEKOS



We spent almost as much time exploring city streets, sampling the crepes and tapas, and watching World Cup soccer as we did visiting famous buildings. Barcelona photos: Barcelona Pavillion (Mies Van de Rohe), La Sagrada Familia (Antoni Gaudi), Mercat Ste. Caterina (Enrique Miralles and Benedetta Tagliabue)



DO YOU HAVE TRAVEL PHOTOS OR SKETCHES YOU'D LIKE TO SHARE IN THE THE NEWSLETTER?
EMAIL EDITOR@WMAIA.ORG

2013 NCARB AWARD UMASS AMHERST

CARYN BRAUSE AIA
KATHLEEN LUGOSCH FAIA

The University of Massachusetts Amherst Department of Architecture was one of three architecture programs selected as a recipient of the 2013 NCARB Award.

The school's proposal, "Voices from the Field: From Design Concept to Reality," was awarded \$25,000 for developing innovative curricula that merge practice and education. The NCARB Award is meaningful to us as we continue to develop our young program. We were first accredited in 2005, so we are still honing and shaping our unique approach to education.

Through the NCARB Award, we're developing a new experiential seminar entitled "Voices from the Field." The project is a response to the 2012 Practice Analysis of Architecture, which strongly recommended integrating fieldwork into the academic curriculum to establish an early understanding of construction sequences. This integration gains additional immediacy with NCARB's recently announced changes regarding the relationship between internship, the academy, and licensure.

As the period of internship increasingly becomes embedded in the academic curriculum, identifying methods to navigate the relationship between theory, design, construction, and practice becomes ever more compelling. The course is structured to provide an opportunity for students to learn about the relationship between concept and technical design, to develop an understanding of construction

processes, and to become familiar with the architect's role from design to construction and maintenance. Through the course, students gain unique exposure to the nuances of the construction process by first reviewing project documentation and then going on a series of construction site visits.

The course examines active building projects in our region, Western Massachusetts, and on the UMass Amherst campus. The course got off to a strong start during this past spring 2014 semester. We went on seven construction site visits to five different high-performance building projects, including two university sports facilities, an academic classroom building, an environmental center, and a multi-family housing complex.

Touring the construction sites and discussing the projects with architects, contractors, engineers, and facilities managers demonstrated to students how architects make decisions regarding sustainable design issues including building materials and construction processes.

Students wrote culminating essays synthesizing their experiences. Yi Wang wrote of visiting the Bechtel Environmental Classroom project with Bruce Coldham, "Without exaggeration I would claim that Bechtel exerts the greatest influence on my plans for my future career. From the drawings we can see that Bruce and his team members devoted a lot of energy and care to this project, which causes me to reflect on the responsibility of the architect. To create a healthy interior environment, they have spent a lot of time looking for



Champion Center Site, UMass Amherst

VOICES FROM THE FIELD: FROM DESIGN CONCEPT TO REALITY

appropriate substitutes and taking them into account in this design.”

A primary goal of the Award is to increase meaningful interaction between students and non-faculty architect practitioners. While the WMAIA has always maintained strong relationships with the Department of Architecture, the course has enabled students to get out in the field and see the incredible variety of work being built in the region.

The non-faculty practitioners included those practicing at small firms, large firms, and university facilities departments. They ranged from a recent graduate, who is now an intern, to deeply experienced architects. Engaging a diverse group of non-faculty practitioners demonstrated different practice models and offered insights into the professional conduct issues that arise in manifold professional situations.

Additionally, these site visits offered the 15 advanced graduate students an opportunity to see the breadth of the field, enabling them to envision the different types of roles they could imagine for themselves when they graduate and go off to practice.

“Clearly, there is an incredible difference between the schematic design process typical in architecture studio courses compared to the actual depth and rigor that is required to execute design and construction of a real-world project,” wrote 2015 Master of Architecture student Rachel Beesen. “Before taking this course, I did not fully understand the relationship and transitions between design and

construction. I now see that these relationships and transitions are vital parts of the process of creating a building, just as important as design.”

The award is continuing to bring attention to our program nationally. This summer, a video documenting the project was shown at the NCARB National Meeting in Philadelphia and the IDP Coordinator’s Conference in Miami. In addition it is featured on NCARB’s website and blog. We’re incredibly grateful to our non-faculty practitioner supporters who enabled us to garner this award and who are partnering with us to share their projects and experience with students. During the Spring and Fall semesters of 2014, this includes Doug Marshall AIA from UMass Campus Planning, Bruce Coldham FAIA and Thomas RC Hartman AIA from Coldham & Hartman Architects, Alec Zebrowski from Perkins + Will Boston, Rich Halm RA from JCJ Architecture, Kristian Whitsett AIA from Jones Whitsett Architects, Inc, Marc Sternick AIA from Dietz and Company Architects and Kris Kennedy and Lindsay Schnarr Associate AIA

from Steffian Bradley Architects.

We hope that other WMAIA members will partner with us in future semesters.

- Caryn Brause AIA, Assistant Professor of Architecture + Kathleen Lugosch FAIA, Professor & Master of Architecture Program Director, Co-PI’s 2013 NCARB Award

All Photos: Caryn Brause / Rachel Beeson



Caryn Brause AIA with Students at UMass Amherst



Thomas RC Hartman AIA with Students



Bruce Coldham FAIA with Students at the Ada + Archibald MacLeish Field Station, Whately MA

WOULD YOU LIKE TO WRITE AN ARTICLE FOR THE NEWSLETTER?

EMAIL EDITOR@WMAIA.ORG



WMAIA'S CLARK MUSEUM TOUR



Photo: Jacquie Scott AIA



Photo: Chris Farley AIA



Photo: Jacquie Scott AIA

WMAIA GROUP TOURS CLARK INSTITUTE

On October 1st, WMAIA took a tour of the newly finished renovation and addition to the Clark Art Museum designed by Japanese architect and Pritzker Prize winner Tadao Ando. After 14 years of planning, designing, and building, the museum reopened this past July. WMAIA members were ready to see the work and appreciate the design.

From the Boston Globe: The new Clark has been so radically revamped and enlarged that it feels like an entirely new place. It has grown by almost 100,000 square feet of space, and most of its old space has been or is being renovated. Once isolated and inward-looking, the Clark now reaches out like a new guest at the party to become an integral part of the great landscape of the Berkshires.

CONGRATULATIONS 2014 WINNERS!

MARVIN
ARCHITECTS
CHALLENGE

**2014 BEST
IN SHOW**

Atlantic Gable - Patrick Ahearn
Architect LLC, Boston, MA



Inspire and Be Inspired!

To view the full gallery of winners, visit www.marvin.com/architectschallenge

CONTACT YOUR LOCAL MARVIN RETAILER TO FIND SOLUTIONS FOR YOUR NEXT PROJECT

r.k. Miles, Inc.
24 West Street • Route 5 North • West Hatfield, MA
866.446.5820 | www.rkmiles.com

effective
award-winning
elegant
colorful

websites / logos / brochures
architectural photography
text / copy writing
qualifications / proposal packages
awards program packages
marketing plans

clients include:

Head Start
Margo Jones, Architects
C.J. Lawler Associates, Architects
Lukas Design Interiors
Paintbox Theatre
Berkshire Hematology Oncology
J.P. Engineering

**mica
blue
CREATIVE**

Julie Waggoner
(413) 665-2280
jwaggoner@micablue.com



CONNECTING TO CRAFT

FOUR WORKSHOPS IN THE CONSTRUCTION TRADE

The AIA College of Fellows recently awarded the WMAIA Emerging Professionals in Architecture a \$3600 grant to conduct four workshops on construction materials and assemblies. The grant will allow workshop participants to visit trade shops across the Valley for two-hour, hands-on sessions and conversations with skilled contractors.

"I feel pretty strongly that there is an overlooked social dimension to design where you need to learn to talk to contractors to understand how they fabricate and install the details we design. There aren't a lot of opportunities to have open, unguarded conversations with skilled craftsmen. My hope for these workshops is that emerging architects will gain greater familiarity with building materials and greater insight on people who make these details real on the job site." says Dorrie Brooks, Associate AIA, Coordinator, WMAIA Emerging Professionals + author of the Connecting-to-Craft Grant Application

Workshops will address material behaviors and principles of assembly as they relate to wood, glass and metal. Each workshop will also be documented and archived on a pilot WMAIA/EP Detailing Toolkit website for future use as studio reference material. Registration material will be available soon.

For more information + to pre-register, please contact **Dorrie Brooks at db@joneswhitsett.com**

Workshops are free to WMAIA associate members.

\$10 for full AIA members.

\$20 for non-members.

Advanced registration for the series is required.

Limited to 15 participants.

PROPOSED DATES + TOPICS:

PRINCIPAL + PROCESS OF WINDOW ASSEMBLY

NOVEMBER 20, 2014, 4PM – 6PM

Instructor: Jeremy McClain

Chandler Architectural Products

DETAILS IN STEEL

JANUARY 13, 2015, TIME TBD

Instructor: Salmon Studios

BRINGING IT ALL TOGETHER / INTELLIGENT FRAMING + FINISH CARPENTRY

FEBRUARY 12, 2015, TIME TBD

Instructor: Specialized Construction Inc.

OLD + NEW TECHNOLOGY IN ARCHITECTURAL WOODWORK

MARCH 12, 2015, TIME TBD

Instructor: Bruce Voltz, VCA



Chandler Architectural Products setting up a full size window mock up at the Conte School



THINGS TO SEE + DO IN WESTERN MASSACHUSETTS

Fall 2014 Lecture Series UMASS Amherst Department of Architecture

All Lectures & Symposium at **Gordon Hall / Room 303**
418 North Pleasant Street, Amherst MA

Reception in Gordon Hall Atrium follows each lecture/event

FOR INFORMATION ON THE LECTURE SERIES CONTACT:
Joseph Krupczynski: jkrup@umass.edu

FOR INFO ON HISTORIC PRESERVATION SYMPOSIUM CONTACT:
Max Page: mpape@umass.edu

www.umass.edu/architecture

HERS RATER TRAININGS

Become a HERS Rater with the
Northeast HERS Alliance.

Online Training:

September 29- October 10

Weekdays 9am-12pm

4-Day Classroom/Field Training:

Choose between: October 27-30 -

Manchester, NH OR

November 3-6 - Berlin, CT

The Process of Making

Michele Saeë

Tuesday
October 7
5:30 PM

With studios in Los Angeles and Beijing, architect Michele Saeë believes that architecture is a part of everyday life, and that the work of architecture reflects our needs, our desires and our ability to improve the quality of our relationships with creativity and adventure.

Can We Design for Social Change?

Tuesday
October 28
5:30 PM

Gail Sullivan

Gail Sullivan came to architecture after more than a decade of work in feminist, environmental and international organizations, which she began as a UMass Amherst undergraduate in the 1970's. A few years after receiving her M.Arch at MIT, she founded *Studio G Architects* to design people-centered, sustainable buildings and urban places that promote progressive social change.

Futures for Historic Preservation

Friday
November 7
8:30 AM - 1:00 PM

Preservation Symposium

In anticipation of the 50th Anniversary of the National Preservation Act of 1966, the UMass preservation program will begin a series of discussions with leading scholars and practitioners. This year's half-day workshop will include presentations from Daniel Bluestone (Boston University), Sergio Kiernan (Buenos Aires), Cinzia Abbate (Rome), and Tom Mayes (National Trust for Historic Preservation).

CEU's available through Western Massachusetts AIA
umass.edu/preservation

Tim Castillo is an associate professor at the School of Architecture and Planning at the University of New Mexico and the Director of the Art, Research, Technology and Science Digital Media Laboratory. His research focuses on emerging technologies as they apply to hybrid systems of design.

Tuesday
November 18
5:30 PM

Hybrid Worlds: Emerging Trajectories in Design

Tim Castillo



Building and Construction Technology
University of Massachusetts, Amherst

BUILDING WITH WOOD FALL 2014 BCT LECTURE SERIES

"Cross-Laminated Timber: A Revolution In Timber Construction"

Wed., October 15th, 9:30am-10:30am - Integrated Science Bldg., Room 145, UMass Amherst

BERND OSWALD, CEO, KLH Massivholz, Austria & NIC CLARK, Managing Director at KLH UK

KLH is the worldwide market-leading manufacturer of large-format glued laminated timber elements, especially Cross-Laminated Timber (CLT) panel products. KLH and its subsidiary KLH UK has been involved in the construction of thousands of wood buildings, including the 8-story Stadthaus in London, UK and a recent 10-story apartment building in Melbourne, Australia.

"Emerging Technologies in Wood and Bio-Based Building Products"

Fri., November 21st - 10am-11am - Integrated Science Bldg., Room 145, UMass Amherst

PEGGI CLOUSTON, Associate Professor, BCT, UMass Amherst

Dr. Clouston teaches courses in structural wood design, material mechanics and bio-based composites to students of construction technology, architecture, and engineering. Her research focuses on modeling and characterizing the probabilistic mechanical behavior of structural bio-based composite materials as well as innovative wood products and systems.

All lectures are free and open to the public. These programs are not registered for continuing learning units but AIA members are encouraged to self-report here: <http://www.aia.org/education/ces/AIAS077025>

A.P.E. Ltd. Gallery



The Diorama Show (Nov. 7-Dec. 7) will include the disparate visions of 8 contemporary artists. Their various approaches are conceptual, realistic, dreamlike, symbolic or reflective often with a strong vein of wit. The dioramas range from small wall hung boxes to a store window-sized scenario.



DO YOU HAVE ANY TECHNOLOGY RELATED QUESTIONS?

EMAIL EDITOR@WMAIA.ORG

THINGS TO SEE + DO IN WESTERN MASSACHUSETTS

THE CLARK ART INSTITUTE



Make It New: Abstract Painting from the National Gallery of Art, 1950–1975 examines the different paths taken by abstract painting in the first quarter-century of the postwar period, cutting across geographies and narrow timeframes as it evocatively engages Tadao Ando's architecture. The exhibition presents Abstract Expressionist and color field masterpieces alongside other canonical works organized by the formal categories of pattern, texture, and shape.

The installation in Ando's expansive galleries makes it possible for visitors to see and consider multiple, contrasting works from a single vantage point, facilitating reflection on the unconventional arrangement of these works, and on the alternative narratives of postwar art.

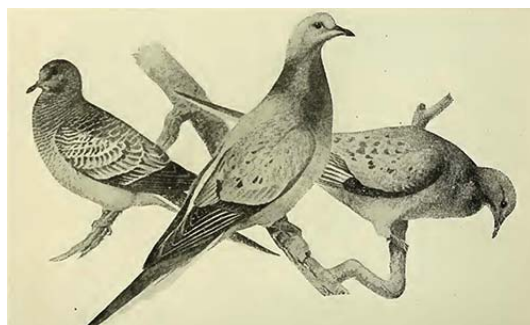
Jasper Johns, 'Target' 1958.



Plastic Fantastic: Opening October 11, 2014

Lee Boroson creates large-scale immersive installations using inflatables, fabric, and light to create phenomenological experiences for his viewers, based on the elemental forces in nature, from air, fog, and smoke, to fire and the cosmos. Boroson's installations are embodied and ephemeral within the space of the museum.

MASS MoCA



Sayler/Morris with Elizabeth Kolbert: Eclipse

Eclipse consists of a massive 100-foot video projection, screens on the walls and ceiling of MASS MoCA's four-story atrium. The video loop shows a flock of passenger pigeons in reverse-negative silhouette lifting out of a life-sized tree, accompanied by sound design consisting of layers of digitally processed human voices.

DO YOU HAVE ANY ENERGY RELATED QUESTIONS?

EMAIL EDITOR@WMAIA.ORG

FEATURED ARTISAN

JOHN F. GRANNEY METAL DESIGN, INC. IS A CUSTOM METAL FABRICATION STUDIO SPECIALIZING IN THE MOST DEMANDING SITE SPECIFIC ARCHITECTURAL AND ORNAMENTAL IRON PROJECTS THROUGHOUT SOUTHERN NEW ENGLAND AND NEW YORK. IN COLLABORATION WITH THE CLIENT, CONTRACTOR AND DESIGN PROFESSIONALS, WE PRODUCE WORK WHICH FULFILLS THE ARTISTIC AND TECHNICAL GOALS OF THE PROJECT. OUR HALLMARKS ARE DESIGN FLEXIBILITY, RELIABLE ENGINEERING AND UNCOMPROMISING ATTENTION TO DETAIL AND FINISH.

OUR ABILITY TO FABRICATE IN AN APPROPRIATE STYLE AND WITHIN BUDGET HAS EARNED THE GRATITUDE OF A WIDE VARIETY OF CLIENTS.



Sun Shield

Photo: Laurel Graney



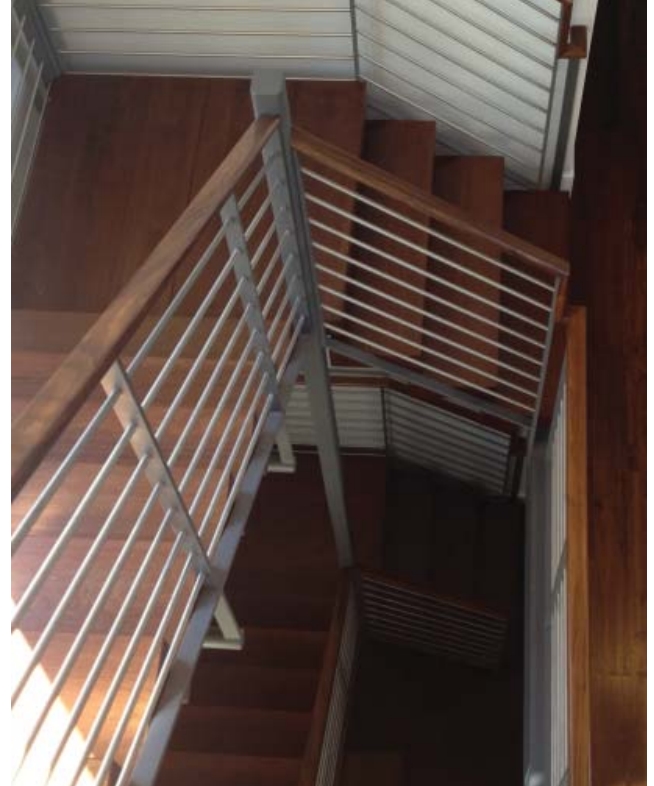
Entrance Canopy

Photo: Hope Sexton



Stainless Stair Rail

Photo: Marc Polumbo



Interior Round Rod Stair

Photo: Hope Sexton

JOHN F. GRANNEY METAL DESIGN SHEFFIELD, MA

FEATURED ARTISAN

WROUGHT METALS HEATED IN THE FIRE AND FORMED OVER THE ANVIL ARE THE ROOT OF OUR WORK. THE TRADITIONAL METHODS OF REPOUSSE, DIE FORGING, SLIT PUNCHING, RIVETING AND COLLARING ARE INTERPRETED IN BOTH CONTEMPORARY AND CLASSIC COMMISSIONS. WE JOIN THESE TIMELESS ARCHITECTURAL BLACKSMITH TECHNIQUES WITH THE CHANGING TECHNOLOGIES OF MODERN METALWORKING.

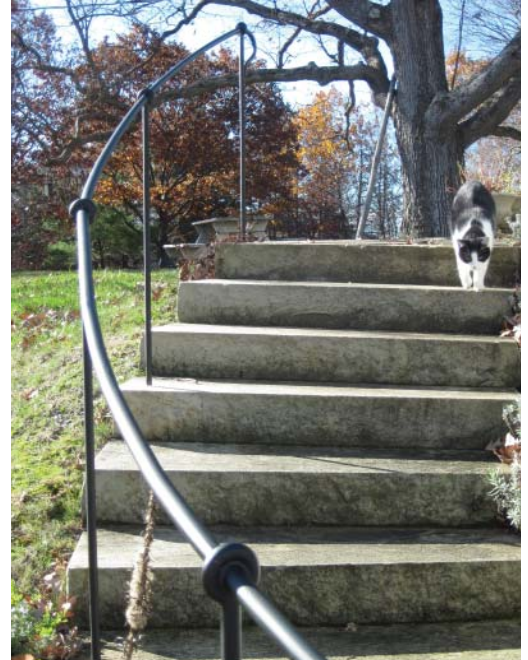
THE PROCESS FROM BAR STOCK TO FINISHED INSTALLATION INVOLVES ONGOING CLIENT DIALOG AND DILIGENT ATTENTION TO THE SPECIFICS OF LOCATION. PLEASE SEE MORE OF OUR WORK AT WWW.GRANEYMETALDESIGN.COM AND CONTACT US AT 413.528.6749



Branch Handrail Photo: Laurel Graney



Historic Handrail Photo: John Graney



Curved Handrail with Cat Photo: Laurel Graney



Mahawie Theater Brass Rails Photo: Laurel Graney



Gothic Arch Stoop Rail

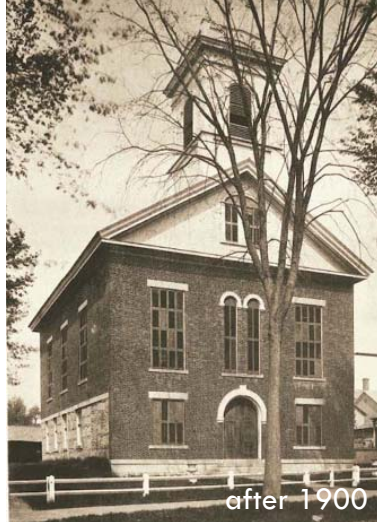
Photo: John Graney

HAVE YOU WORKED WITH AN ARTISAN WE SHOULD KNOW ABOUT?
NOMINATE SOMEONE FOR 'FEATURED ARTISAN' BY EMAIL AT EDITOR@WMAIA.ORG

BEFORE + AFTER: 79 SOUTH PLEASANT STREET



1870s



after 1900



2010

The 79 South Pleasant project explores how a building can exist as both historic and modern concurrently. Through context-inspired materiality and juxtaposition of form, material, and texture, the project carefully establishes relationships between multiple contexts: campus/downtown, existing/new, traditional/modern, individual/group. The renovation and new addition reassert the building's historic prominence as one of the oldest extant buildings on the town common while making a clear statement that this is a modern building, designed for modern performance and use.

The project created spaces for the Five College Center for the Study of World Languages and for three non-academic Amherst College departments. A primary goal was to create a sense of connection with campus. The college community can access campus departments via the recessed entry between the old and new buildings. A new, narrower driving lane (without previous parking spots) maintains vehicular access while allowing the campus lawn to extend further toward the building, as it had prior to 1960. By opening-up sightlines from campus, the building now caps the end of the campus lawn.

The historic building's location on the town common warranted that it also maintain a clear connection to downtown Amherst. Along the street, a widened plaza welcomes the public with benches, plantings, and a bus shelter. The many visitors to the languages department can access it directly through the street-facing east entry, whether arriving by car, bike, bus, or on-foot.

Very little detailing from the original building remained. The sanctuary's original 12' high windows had been replaced with pairs of double-hungs when a third floor was inserted into the sanctuary in the 1960s; the arch that stood behind the pulpit had been hacked away to make room for a staircase; and there were few traces of any original woodwork.

By removing the years of accretion, the fundamental features of the building could be on display: its original shape emerged from behind porches and bay windows, and the original double-height window openings—always visible but obscured by awkward infill—were revealed.



BEFORE



AFTER

13

CONVERGENCE

Boston Architectural College - McCormick Gallery, Boston, MA: October 11 – November 28, 2014
A juried exhibition highlighting the contributions + accomplishments of alumni throughout the BAC's 125 years will feature Andy Grogan's work with Kuhn Riddle on 79 South Pleasant



Using materials inspired by the surrounding context, the new addition quietly references the existing building while establishing its own identity. With its contrasting color, it becomes a backdrop against which the original building is displayed. These new materials—terracotta panels, anodized aluminum, and metal panel siding—suggest the historic qualities of adjacent buildings via color, texture, proportion, and shadow.



Partner in Charge: Charles Roberts AIA
Project Manager: Andy Grogan Associate AIA
Structural Engineer: GNCSB
MEFP Engineer: BVH Integrated Services
Site: Berkshire Design Group
Envelope Consultant: Wiss, Janney, Elstner Associates
Photography: Joshua Sugiyama



DO YOU HAVE A BEFORE + AFTER PROJECT FOR US TO FEATURE?

EMAIL EDITOR@WMAIA.ORG



WM AIA programs

Save the Dates:

CURRENT TRENDS IN LED & DAYLIGHTING

When: October 7, 2014,
10 a.m. - 4:00 p.m.

Where: UMASS/Amherst
Campus Center, 10th floor
(Hadley Room), Amherst, MA
LUs: 5 HSW

Sponsored by: Reflex Lighting

UMASS HISTORIC PRESERVATION & SUSTAINABILITY

When: November 7, 2014

WMAIA ANNUAL MEETING & AWARDS

When: December 4, 2014

More information to come.

ARCHITECTURE THROUGH FILM ^{FALL} 2014

Excerpts from *ARCHITECTURES*, a documentary series produced by European public television channel, ARTE, which explores an eclectic mix of some of the world's most renowned buildings.

OCTOBER 8: LIVE

Nemauses 1 - Jean Nouvel
Family Lodging in Guise - Andre Godin
Casa Mila - Antoni Gaudi
1.5 LUs

OCTOBER 22: LEARN

L'Ecole des Beaux Arts
Multimedia Library of Sendai - Toyo Ito
The Siza School - Alvaro Siza
1.5 LUs

NOVEMBER 5: RULE

Municipal Center of Saynatsalo - Alvar Aalto
Reception and Congress Building - Adalberto Libera
Citidel of Lille
1.5 LUs

NOVEMBER 19: WORSHIP

Convent of La Tourette - Le Corbusier
Abbey Church of Saint Fey
Cologne Cathedral
1.5 LUs

*Presented by the Western Massachusetts Chapter of the American Institute of Architects
and the Five College Architectural Studies Program*

**Location: Room 117 @ Fayerweather Hall • Amherst College • 6:30 PM.
All films followed by discussion. Free and Open to the Public**



**DID YOU NOTICE WE ARE NOW (PARTIALLY) IN COLOR?
WHAT DO YOU THINK?**

EMAIL EDITOR@WMAIA.ORG WITH FEEDBACK!

