

# WMAIA news

Newsletter of the Western Massachusetts Chapter of the American Institute of Architects

## WMAIA President's Letter

by Thomas RC Hartman AIA

18 December 2009

**I'd like to thank the chapter for electing me President for the next two years.** It's been a pleasure to serve as President-Elect while Bill Austin AIA was President, and I'd like to thank him for his gracious leadership. Bill has strengthened our relationship with the Home Builders Association and working with Lorin Starr Affiliate AIA, has increased our visibility to our membership and the community. Bill will continue to serve as Past President within our chapter while also being President Elect of AIA Massachusetts. Thank you Bill!



AIA Massachusetts is our statewide organization, and includes our chapter, Central MA AIA, and the Boston Society of Architects. Each chapter has three voting members of a nine member board. The role of AIA Mass is to advocate for architects at the statewide government and policy levels, and is staffed by a lobbyist and Public Policy Director, John Nunnari. In the coming year there are several initiatives that we will be working on. These include creating the ability for design professionals to place mechanic liens for outstanding payments and developing a statewide home energy rating system for residential projects.

Our Chapter proposed the initiative of a statewide home energy rating system, which was a recommendation of the Governor's Zero Energy Task Force, to AIA Mass for statewide support by our collective membership. In my Presidency, I plan to continue to develop our relationship and understanding with the builders, realtors, and bankers towards this end. There is general support for the rating, yet apprehension that it be mandatory at the time of sale. We've had individual meetings with the Home Builder's Association of Western MA and members of the Realtor's Association of the Pioneer Valley, and I look forward to organizing an opportunity for our members and related professions to discuss the initiative.

At our annual dinner on December 9th, I enjoyed seeing our collective work, and would like to do this more often. The format of the presentation, with 10 slides and 15 seconds each was derived from Pecha-Kucha. (<http://www.pecha-kucha.org>). Maybe a couple of times a year we visit each other's offices and have this sort of social gathering. What do you think?

continued on Page 2

## Inside

WMAIA President's Letter. . .1

### OUR NEWS

Annual Dinner Recap . . . . . 2  
 Membership Renewals . . . . . 2  
 WMAIA Website . . . . . 3  
 Student Scholarship . . . . . 4

### MISCELLANEOUS

Solar Decathlon 2009 . . . . . 5

### IN THE GALLERIES

Greening The Valley . . . . . 6  
 Greening the Berkshires . . . . . 10  
 Standing Ovation Applause Button . . . . . 11  
 Places We Know . . . . . 11  
 NewEnglandArchitecture . . . . . 11  
 Gravity is a Force to be Reckoned With . . . . . 11  
 Design USA . . . . . 11  
 Eero Saarinen . . . . . 11

### COMPETITIONS

Smart Growth . . . . . 12  
 Zero Net Energy Building Award . . . . . 12  
 BSA Design Awards . . . . . 12

### CONFERENCES/PROGRAMS

Greening the Valley Lecture Series . . . . . 13  
 NESEA BuildingEnergy10 . . . 13

WMAIA PROGRAMS . . . . . 14

# OUR NEWS

## continued from Page 1

Our programs for the coming year are already filling up, and there's no shortage of topics and programs for Chapter meetings. My colleagues on the Executive Committee are dedicated to ensuring that the benefits of being a member of WMAIA are clear and valuable. Please contact me at **Tom@ColdhamAndHartman.com** if you have any suggestions or comments.

## Membership Renewals

We appreciate your continued participation in the chapter! The American Institute of Architects would not be where it is today without its valuable members. Your membership strengthens the profession's collective voice.

Please submit your WMAIA dues renewals by January 15. AIA and Associate AIA members may have already received a printed renewal as well as an email with a special personalized link from AIA National. You can also go to **www.aia.org/renew** and log in to pay your dues.

Affiliate members may still pay their dues to the Boston office:

WMAIA  
52 Broad Street  
Boston, MA 02109  
Fax: 617-951-0845  
Tel: 617-951-1433 x253

If you have any questions about your 2010 WMAIA membership renewal, please contact **director@wmaia.org**.

## Annual Dinner Recap

by Erika Zekos Associate AIA

**December 9, 2009 brought a snowy, cold evening, but we saw a packed house for WMAIA's Annual Meeting held at Onyx Restaurant in Springfield.** About 50 chapter members and guests joined the group on the third floor mezzanine dining room for some chapter business, a delicious dinner and lively presentations.

After a greeting from Thomas RC Hartman AIA we got down to business. The 'official' reason for the meeting was to gather the membership for a votes on next year's slate of chapter officers and on recent the changes to the By-Laws.

WMAIA's By-Laws have recently undergone a review by the Executive Committee. The last time the By-Laws were reviewed was in 2000, and we have made some minor modifications to more accurately reflect the current operation of our Chapter. You can find this summary of the revisions and the complete By-Laws posted on our website at **www.wmaia.org** The revisions include:

- Change the date of the Annual Meeting from January to December
- Require voting at the Annual Meeting for representation to the Executive Committee, AIA Massachusetts and AIA New England. (We have been simply voting on Officers in the past.)
- Establish the size of the Executive Committee to be not less than six or more than 12, and to set terms of two years for each member, with no term limits.
- To formalize that the terms of President and President-Elect are two years, as we have been operating for some time.
- To eliminate the office of Vice President and consolidate that role

in President-Elect.

- Remove allied membership as a category to strengthen Affiliate, both individual and corporate.

Election of officers followed. In 2010 we will be guided by the leadership of Thomas RC Hartman AIA as WMAIA President while Jeremy Toal AIA was elected President-Elect and Christopher Farley AIA was elected to the posts of Secretary and Treasurer.

Martha Montgomery AIA, Bill Austin AIA (our Past President) and Steve Schreiber FAIA were elected as WMAIA's representatives to the Board of Directors for AIA Massachusetts. Martha will serve as Secretary/Treasurer and Bill is President-Elect of AIA Mass, each for one-year terms.

With the business taken care of, Tom Hartman presented Bill Austin with a gift as a thanks for his service as our President for the past two years. Bill graciously accepted and passed the baton to Tom.

WMAIA also had the pleasure of awarding a \$1000 scholarship (a joint scholarship program of WMAIA and AIA National) to a UMass Amherst Architecture+Design student. This was presented to Dorrie Brooks, a second year M. Arch student for design excellence, community and university engagement (see Page 4).

Following the dinner we heard eight presentations of recent work from chapter members. Speakers followed the Pecha-Kucha format (each showing ten slides that scrolled automatically on a 20 second timer) with a little bit of time after each presentation for questions and answers. Needless to say, things moved quickly along and the energy was lively throughout. Here's a quick run down of who we heard from:

- Amherst College's Director of Design and Construction, Tom Davies AIA about recent work at the college;
- Austin Design's Chris Farley AIA and Bill Austin AIA talked about a few of their latest projects including the "Cloud" (ask them about it);
- Grigori Fateyev and Stephan Green AIA of Clark & Green discussed two projects, including an elegant lakeside residence.
- Next up, Bruce Coldham AIA of Coldham & Hartman discussed his design of the Leverett House;
- Jeremy Toal AIA and Marc Sternick AIA of Dietz & Co. presented recent work and a few project still on the drawing boards;
- Laura Fitch AIA of Kraus Fitch Architects discussed her design for Sawyer Hill cohousing;
- Kuhn Riddle's John Kuhn AIA presented their design for the renovation of the old Basketball Hall of Fame (which includes Onyx Restaurant, our hosts for the night);
- Margo Jones AIA spoke about a number of her firm's latest projects.

Special thanks to Lorin Starr Affiliate AIA for her work in organizing this event and all of WMAIA's other programs. Her always pleasant attitude, creativity and consistent guidance as both Executive and Program Director have helped to strengthen our chapter over the past few years. Lorin's leadership, along with that of our excellent Board of Directors, promises an exciting and productive 2010 for WMAIA!

## WMAIA Website

by Erika Zekos Associate AIA

**One of the primary ways that the chapter works to communicate with the members is through our website, [www.wmaia.org](http://www.wmaia.org).** The WMAIA website is regularly being updated and you've probably noticed that we're sending you there more and more often to register for programs and to find information. The

website is also a vital link to the larger community. Here is some interesting information about recent usage of [www.wmaia.org](http://www.wmaia.org).

In 2009 we had almost 22,000 visits to [www.wmaia.org](http://www.wmaia.org). If we break the statistics down for the just the month of November 2009 we had 511 unique visitors (and 448 of them came for the first time). Many visitors are coming to the site directly, but others are coming through search engines (primarily Google) with keyword searches such as, "architects western MA", "green house plans", "Greenfield architects" and "restoration architects Massachusetts" or by searching for firm names or individuals. In fact, looking at the activity paths of visitors shows that the vast majority come to the home page and move on to the firm profiles. In November a number of visitors also looked at the information about the Smart Growth competition. Downloads of WMAIA News, the WMAIA/ Five College Architecture through Film series and other WMAIA program information were also popular.

People are leaving WMAIA's site to go directly to firm web sites. "exit paths" information shows that during November, 19 different firm web pages were visited after searching on [www.wmaia.org](http://www.wmaia.org). People are also heading to UMass Architecture+Design, [Valleyideas.org](http://Valleyideas.org) and area museums.

The vast majority of our visitors are from western MA, but we've had visits from the U.K., Australia and Japan as well as many from CT, RI, NH, VT and NY (among other states).

You can help us make the website an even better source of information for our membership and client community. If you would like to add your firm profile or update your existing one then please contact Julie Waggoner at [jwaggoner@micablue.com](mailto:jwaggoner@micablue.com). Thanks!

## WMAIA NEWS

The Western Mass. Chapter of the American Institute of Architects publishes WMAIA News four times a year. It is circulated to all members, advertisers and subscribers.

Please direct all newsletter correspondence to Erika Zekos Associate AIA, Editor, Studiozed, 40 Hulst Road, Amherst, MA 01002 (413) 559-0224, [studiozed@comcast.net](mailto:studiozed@comcast.net).

Articles, photos, notices of events and other information are welcome.

Opinions expressed in the newsletter are not necessarily those of the WMAIA. The Editor reserves the right to reject or revise material as space and subjective opinion permit.

### President:

Thomas RC Hartman AIA

### President-elect:

Jeremy Toal AIA

### Secretary:

Christopher Farley AIA

### Treasurer:

Christopher Farley AIA

### Past President:

Bill Austin AIA

### Members:

Erica Gees AIA

Martha Montgomery AIA

Sigrid Miller Pollin FAIA

Stephen Schreiber FAIA

Emily Trulson Affiliate WMAIA

Julie Waggoner Associate AIA

### Editor, WMAIA News:

Erika Zekos Associate AIA

### Executive and Program Director:

Lorin Star Affiliate AIA

For more information on the WMAIA Chapter, please contact Lorin Starr, Executive Director at [director@wmaia.org](mailto:director@wmaia.org).





Dorrie Brooks receiving her WMAIA Scholarship  
photo by Lorin Starr Affiliate AIA

## Student Scholarship

**For the past few years WMAIA has been offering a small scholarship to a student enrolled as a junior or senior in the UMass Amherst Architecture+Design undergraduate architecture program,** or as a graduate student in the M. Arch program. This year AIA National matched the WMAIA contribution of \$500 so that we could offer joint scholarship of \$1000. Students were asked to submit an 11" x 17" presentation of their best project along with a one-page written statement explaining the design intent and approach to the project as well as information about their community and student affiliations. The judging criteria were design excellence, community and university engagement and evaluation of the written statement.

Dorrie Brooks is a second year graduate student pursuing a Masters in Architecture after a twenty year career as a documentary filmmaker. She is a resident of Florence and a mother of two young children. She was selected from among eight applicants to receive the scholarship from WMAIA. At right is an image of the project she submitted and her accompanying text.

### *Responding to Suburban Sprawl: A Design for Westfield, Massachusetts*

*When Sylvia Lefcourt first set eyes on her Levitt-built home in 1948 the lawn was bare and the paint job unfinished. Nonetheless, Ms. Lefcourt cried tears of joy. "We had achieved the American Dream." The collective impulse of Ms. Lefcourt and the millions of others who migrated to suburbia in the post-war years reshaped the American imagination consuming millions of acres of open space along the way. Nonetheless, architects have repeatedly made the mistake of discounting the suburban juggernaut and overlooking the human desires that fuel it. This project investigates the middle class suburban impulse. It reappraises the suburban archetype with the intent of borrowing its pattern language and semiotic codes hoping that the codes and language of suburbia can help us to design a new kind of urban housing for a more environmentally anxious era.*

*This design for a 100 by 100 foot vacant lot in downtown Westfield imagines a vertical cul de sac suspended within a structural grid. Key suburban codes include the individuation of dwellings, the emphasis on green space, the organization of public to private zones of interaction and the visual and literal expression of the neighborhood as enclave.*

*The design is organized to enhance neighborhood and individual identity. Eight homes open onto central plazas that are served by central stair towers and elevators. Individual units are two story each with private balconies. Southern-oriented loft-style open plans maximize day-lighting and energy efficiency. A revealed structural grid provides a framework for support and for plumbing and electrical circulation.*

*Where the suburban dwelling eschews environmental stewardship, the vertical neighborhood demonstrates it. Rainwater catchment diverts storm runoff and nourishes a 6000 square foot green roof system. Green roofing absorbs and filters storm water and gray water while providing recreational, spiritual and agricultural opportunities for residents. And finally, the development uses 1/16th the amount of land as its suburban equivalent, dramatically reducing carbon emissions while conserving open space.*



## MISCELLANEOUS



Penn State's Living Wall  
photo by Ray Kinoshita-Mann AIA

## Solar Decathlon 2009

By Ray Kinoshita-Mann AIA

**This year UMass Amherst seriously toyed with the idea of applying for Solar Decathlon 2011**, the biennial Department of Energy (DOE)-sponsored event where 20 institutions worldwide compete to create the most energy-efficient solar house - now in its fourth round. About a dozen faculty and staff from several quarters of the University stepped forward last spring with interest in assembling an application. The Environmental Institute - an outreach and research organization within the University - invited Chris Jarrett from the 2007 Georgia Tech team, who gave us an enormously helpful talk and workshop about the real workings of the application and competition process. Teaching about the Solar Decathlon as one of the Chancellor's new Freshman Seminar topics gave me a stipend to make a quick trip in October to Washington D.C. to examine the 2009 houses.

As readers probably know by now, the top-ranking teams were 1) University of Darmstadt (also the 2007 winner); 2) University of Illinois; 3) Team California. By now a 'mature' competition, this year's entries compared to those of 2007 were at once less adventurous (from the point of view of architectural variety), and much more pointed in what each was trying to achieve. These distinct priorities played out in the course of the competition, almost as if they were scripted.

It is impossible from the outside to truly understand the intense effort and pressure of taking on a Decathlon house. We were fortunate to have some added insight from Aaron Poritz, an Amherst native, whose design became the basis for 'Refract House', the Team California entry. Aaron's school, the California College of the Arts, teamed with Santa Clara College, which had demonstrated strong engineering (but weak design) in 2007. The incredibly elegant house that resulted belies the fierce struggle that went on to maximize solar PV production and energy-efficient performance while also integrating other significant architectural and 'green' lifestyle considerations, such as flexibility and expandability, and indoor/outdoor living spaces. Aaron seemed both delighted and slightly scarred by the experience.

Team California pulled into an early lead as the competition week began, getting a big boost from their 'architecture'



Team California's Refract House  
photo by Ray Kinoshita-Mann AIA

scoring. Of the ten 'contests' of the Decathlon, 'architecture' - more or less a subjective measure of the project's 'delight' - is one of the first, while the more objective (and rigorous) measures of things like 'engineering' and 'net metering' come later. PV arrays hummed along in the sunny weather, and things looked good for those who, like California had good passive solar design. As required, towels were washed, nice meals cooked, impressive displays made of entertainment and LED lighting. Midweek, however, the weather went cold and drizzly. Thursday morning, October 8th, just as I stepped into the Team California house, a student guide glumly announced that Illinois had pulled ahead. Illinois had built their compact, barn-board sheathed house to Passive House (zero-energy) standards, with a whopping R-50 foamed into an innovative bamboo plywood moment frame system. Even with doors constantly open for visitors, the stable warm cushion of air in the Illinois house was noticeable on this wet and dreary day, proving that even in D.C. good insulation makes sense. Even as they cheered, however the Illinois team members were bittersweet - with one day left, they already knew that Darmstadt would overwhelm all in the net metering contest.

Darmstadt was certainly cagey with their competition entry, cleverly maximizing opportunities within the constraints of overseas shipping, and because they couldn't resist 'showing off' what can result from well-funded building technology. Theirs was the 'gift-wrapped' box - four modular sections two below, two above to create a double-height square-ish volume - entirely tiled with Building Integrated Photovoltaic (thin-film copper indium diselenide) (BIPV) for a whopping 11.1 kW array.

continued on Page 10

# IN THE GALLERIES

## Greening The Valley

Sustainable Architecture in the Pioneer Valley

February 10 - May 9

UMass Amherst, University Gallery

The University Gallery at UMass Amherst is presenting an exciting exhibition opening on February 10 that features sustainably designed projects from throughout the Pioneer Valley. This exhibit features projects from many WMAIA member firms, offices such as Einhorn Yaffee Prescott as well as nationally and internationally known figures such as Michael Singer and Charles Rose. On the next few pages you'll see examples of contributions to the exhibit from WMAIA members. With many more projects and much more detailed information about the design and technical performance of each building on display we hope that you will be inspired to visit the gallery.

Sustainable design requires broad systemic thinking around critical economic, social, as well as environmental issues. The exhibition will address these issues, providing a springboard for thought provoking questions, discussions, and commentaries. The specific focus on the Pioneer Valley will highlight this region and its forward looking communities. Through models, photographs and virtual tours, the exhibition unites works as diverse as large scale science buildings, private residences, low-income housing and intimate gardens of natural inspiration, and illustrates the many ways that green design can help solve our environmental crisis.

Designed to be exciting and informative to both the architectural community and the general public, this exhibition also features the Green Lounge, a focal point for dialogue, conferences, and networking throughout the three months that the Gallery plays host to Greening the Valley. Professionals, researchers, students, builders, and members of the public can congregate and confer. The Green Lounge serves as a meeting place for the vast commercial and intellectual resources, which will be accessible in the form of samples of eco-friendly materials, hand-outs, and brochures.

WMAIA is proud to support this exhibition and will provide Learning Units for many of the public lectures being offered in conjunction with the exhibit (see Pages 13 and 14 for more info). In addition, look for more information about a guided tour of select buildings in the exhibition coming in this spring.

To find out more about Greening the Valley please visit [www.umass.edu/fac/calendar/universitygallery/events/GREENINGTHE.html](http://www.umass.edu/fac/calendar/universitygallery/events/GREENINGTHE.html)



**Kuhn Riddle Architects**  
**The Ken Burns Wing of the Jerome Liebling**  
**Center for Film, Photography and Video,**  
**Hampshire College**  
**Amherst, MA**

This new building on Hampshire College's campus integrates seamlessly with its surroundings and features a stormwater management system, native plantings and an energy monitoring system which constantly reports on how much energy the building is producing and how much it is using.

photo by Ned Gray





**CHA0designs**  
**Snell Street Residence**  
**Amherst, MA**

This home is set on a wooded lot with deciduous trees for shade in summer and solar gain in winter months. The thermal mass of the concrete floor and central atrium space are among the many green features.

photo by Jeffrey Yardis



**RK Studio Architecture**  
**Mann Residence**  
**Amherst, MA**

While a highly insulated roof and wall system and renewable energy sources such as solar thermal, PV panels and a wood burning hearth are important, the architect is equally concerned with establishing a sensual and functional connection between the interior and exterior.

image by RK Studio Architecture



**Kraus Fitch Architects**  
**Hagadorn Residence**  
**Northampton, MA**

This historic house originally designed by locally-known architect, William Fenno Pratt has been thoughtfully retrofitted to achieve Net-Zero energy.

photo by John Fabel and Jen Luck

**Juster Pope Frazier  
Eric Carle Museum of Picture  
Book Art  
Amherst, MA**

Designed before the term sustainability could be found on everybody's lips, the tight envelope, thick walls and immediate connection with the natural world establish this unique museum as a one of the leaders in green design in the Pioneer Valley.

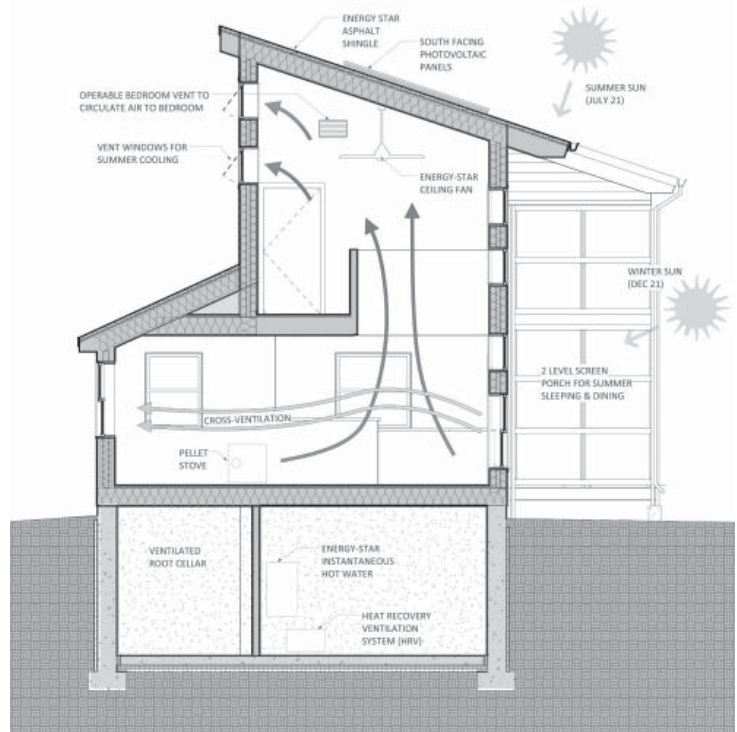
photo by Jim Gipe, Pivot Media



**Coldham&Hartman Architects  
Town Farm Potato Barn, Northampton, MA**

Adaptive re-use of this existing potato storage barn creatively incorporates utility space for the CSA, rental housing and a residence for the farm family. Features include salvaged materials, two-storey light shaft and a 5kW photovoltaic system.

photo by Ethan Drinker



**Miller Pollin Architecture  
Amherst Threesome (Three Single Family  
Residences), Amherst, MA**

The Amherst Threesome is a group of modest homes designed to maximize interior space and comfort. Featuring small footprints and passive solar orientations, superinsulation and solar hot water these houses have been submitted to the USGBC for LEED Platinum certification.

image by Sigrid Miller Pollin





**Austin Design  
Wisdom Way Solar Village  
Greenfield, MA**

Austin Design's LEED Platinum Certified affordable housing works to dispel the myth that low-impact housing is available only in the high end of the market. These homes feature high efficiency design with photovoltaic electricity and hot water systems.

photo by Doug Mason



**Dietz & Company Architects  
Hillside Place at Village Hill  
Northampton, MA**

Each home or apartment in this 40-unit community has an average HERS rating of 40, meaning it they uses approximately 60% less energy than a typical house.

photo by Dietz & Company Architects

## Greening the Berkshires

Wanting to be sure we covered the entirety of our WMAIA chapter's broad geography, WMAIA news reached out to member firms in Berkshire County to see what kind of sustainable designs are being built in the westernmost part of our chapter.

We heard from a number of firms that they have lots of "green" projects under construction in other states or on the boards... we hope to be able to feature those in the "In the Works" section in future issues.

For now, here's a recently completed project in Great Barrington from Clark and Green.



### Clark and Green Architects Fire Department Headquarters, Great Barrington, MA

A major corridor roofed with an insulated translucent skylight system admits daylight deep into the interior of the building, reducing lighting costs while minimizing heat loss. A roof-mounted 10kW pv system reduces the building's consumption from the grid.

photo by Clark and Green

#### continued from Page 5

On a per area basis, these panels were less productive than some of the other arrays, but instead were better at picking up ambient solar energy, which provided further advantage on that cloudy day. 'SurPLUS' was their house theme and name, as opposed to the 'existence minimum' implicit in some of the others - their LED accent lights were on all that day, as opposed to the penurious dim down of the others. Vacuum-insulated panels with something like an R-20 per ¼" thickness, phase change materials for internal heat storage and release, and sensor controlled louvered windows were other features of the German team's design. Incidentally, 2011 contest guidelines have set the array size limit to 10 kW.

Innovations abounded in many of the houses, too numerous to cover in detail here. The amount of tinkering going on to re-engineer heat pumps, rain screens and solar air pre-heat, phase-change materials - was truly impressive, as was the students' knowledge of these systems. Some of my favorites: Team Boston's

heat sink water gel window (R&D by Hunter Douglas), Penn State's exterior-to-interior Living Wall, Rice university's budget-minded row-house, Arizona's featuring of student-developed devices such as a PET bottle water wall. The People's Choice and Market Viability awards went to the University of Louisiana, with its user-friendly 'cajun-style' indoor/outdoor covered porch.

While many have criticized the expense (and hassle) of developing the Solar Decathlon houses, and the high carbon footprint of dragging them to D.C., it is clear to me that each of these projects has in some important way permanently altered the culture of their respective institutions by bringing students, faculty, administrators, businesses and people in general together in an unprecedented collaboration. DOE was quite strategic in understanding it would take just such a 'crazy' mechanism to set such long-term changes in motion. At the time of my D.C. visit, I was just over one month away from the Request For Proposal deadline, and three weeks out from



Darmstadt, surPLUS House  
photo by Ray Kinoshita-Mann AIA

finding out that the Engineering College at UMass wasn't going to commit to its participation after all. With over twenty faculty and staff, dozens of students from UMass and the Five Colleges, WMAIA and several major corporate sponsors prepared to participate, I was still fending off jitters from certain quarters that "there isn't enough research to be done here." Now with the DOE about to announce \$25 million in funding for national research hubs in Building Efficiency, it's a different story, but I suspect that those institutions that have previously mustered the will to participate in the Solar Decathlon will have a clear and real advantage.

# IN THE GALLERIES

## Standing Ovation Applause Button

Through January 30

Free. Across the street from the Lichtenstein Center for the Arts at 28 Renne Ave., Pittsfield, MA.

Standing Ovation is an altered pedestrian crossing button that generates a thunderous round of applause when pushed.

Traffic and directional signage offer a unique opportunity for creative connection when re-purposed. Standing Ovation is designed to stimulate awareness, engagement and laughter, while delivering a serious message about the power of creative action to boost morale, inspire curiosity and connect people to their environment and each other in an important way by transforming public space into a personalized, interactive environment.

## Places We Know: Urban Landscapes

Through January 31

Free. Nashawannuck Gallery, Easthampton, MA.

Local artists exhibit a sampling of paintings, etchings and drawings of the places that have left an indelible impression on them over the years.

## New England Architecture

Through March 28

Free. Historic Northampton Museum, Northampton, MA.

An exhibit of photography by Aaron Helfand that highlights a variety of historic architectural styles.

## Gravity is a Force to be Reckoned With

Through October 31

Mass MoCA, North Adams, MA

Iñigo Manglano-Ovalle's project is based upon Mies van der Rohe's uncompleted project, the 50x50 House (1951), a square structure open to view on all four sides through glass walls. The house is constructed at approximately half scale and inverted, the ceiling of the original becoming the sculpture's floor, the floor becoming the ceiling, and all interior elements such as Mies-designed furniture and partition walls installed upside down.

## Design USA

Through April 4

Cooper Hewitt National Design Museum, New York, NY

Design USA explores the way that design innovation has transformed our lives over the past decade and celebrates the accomplishments of the winners of the first ten years of the prestigious National Design Awards. [www.cooperhewitt.org/EXHIBITIONS/Design-USA/](http://www.cooperhewitt.org/EXHIBITIONS/Design-USA/)

## Eero Saarinen: Shaping the Future

Through January 31

Museum of the City of New York

In this first-ever retrospective of the life and work of Eero Saarinen, never-before-seen sketches, models, photographs and furnishings will appear alongside a specially-commissioned documentary film, which includes interviews with Saarinen's collaborators. More info: [www.eerosaarinen.net](http://www.eerosaarinen.net)

### VERSATILITY • BEAUTY • PERFORMANCE

Whether your project is renovating, remodeling or historic restoration, Marvin has the replacement solution built to your specifications. Including the NEW Marvin Ultimate Replacement Casement, offering design flexibility and superior performance.

**MARVIN**  
Windows and Doors

Built around you.®

Contact Mike Hebert, A.W. Hastings & Co.  
Architectural Products & Services Consultant  
860.384.9301 • [mhebert@awhastings.com](mailto:mhebert@awhastings.com)





# COMPETITIONS

## Smart Growth: Sustainable, Equitable and Smart

Hurry, registration and entry submissions are due January 15.

The WMAIA, The Pioneer Valley Planning Commission, and the Valley Development Council are co-sponsoring a Smart Growth Ideas Competition. The three selected sites for the competition - in Southampton, Palmer and Hadley - offer opportunities for development; each site represents environment and conditions common throughout the Pioneer Valley.

Lots more information at <http://www.valleyideas.org/>.

## Zero Net Energy Building Award

Entries due on January 15.

A search for the best building in the Northeast that captures as much energy as it consumes

To help spur the market for zero energy buildings in the Northeast, the Northeast Sustainable Energy Association (NESEA) has developed the Zero Net Energy Building Award to recognize net-zero-energy buildings designed for the unique Northeast climate. As an incentive for design/build teams, NESEA will offer a \$10,000 cash prize for the best building in the Northeast that can document net-zero energy use while offering a high level of comfort, affordability and reliability.

Visit [www.nesea.org/inspiration/awards/zeroenergy/](http://www.nesea.org/inspiration/awards/zeroenergy/) for more info.

## Boston Society of Architects 2010 Design Award Deadlines

Each year the Boston Society of Architects sponsors awards programs to honor design excellence in Massachusetts, throughout New England and elsewhere.

- February 2: Housing Design Awards
- February 11: Small Firms/Small Projects Design Awards
- February 23: Harleston Parker Medal
- February 26: High Performance Building Awards
- March 4: Interior Architecture/Interior Design Awards
- April 22: Healthcare Facilities Design Awards
- May 3: Future of Design Competition
- May 19: Campus Planning Design Awards
- June 3: Unbuilt Architecture
- June 24: Honor Awards
- July 27: AIA New England Design Awards

Visit [www.architects.org/design\\_awards\\_programs](http://www.architects.org/design_awards_programs) for more information about these programs.

**Resourceful** engineering architecture civil/survey planning

Hill  
engineers  
architects  
planners

50 depot st dalton ma 01226 413 684 0925  
41 park st adams ma 01220 413 743 0013

[www.hillengineers.com](http://www.hillengineers.com)

If you are interested in advertising in WMAIA news contact Lorin Starr at [director@wmaia.org](mailto:director@wmaia.org) for more information.

# CONFERENCES / PROGRAMS

## Greening the Valley Lecture Series

### Opening Reception and Keynote

Wednesday, February 10, 5:00-7:00 PM

Speakers:

- Meg Vickery, Ph.D., architectural historian and guest curator for the exhibition
- Randolph Hester, Prof. Landscape Architecture, Environmental Planning and Urban Design, UC Berkeley.

### Sustainability in the Community: Regional Planning and Grassroots Efforts that are Making a Difference

Thursday, February 25, 7:00-8:30 PM

Speakers:

- Joseph Krupczynski, Assoc. Prof., Art Department, UMass Amherst
- Rudy Perkins, Project Manager and Staff Attorney, HAP Housing
- Catherine Ratté, Principal Planner - Sustainability, Pioneer Valley Planning Commission
- Daniel Ross, Executive Director, Nuestras Raices, Holyoke MA

### Old New and Available for All: Sustainable Homes in the Pioneer Valley

Thursday, March 11, 7:00-8:30 PM

Speakers:

- Bruce Coldham AIA, Principal at Coldham and Hartman Architects
- Ray Mann AIA, Assoc. Prof., Art Department, UMass Amherst
- Ben Uyeda, Chief Architect, FreeGreen Inc.

### Sustainable Campuses: Using Green Buildings as Teaching Tools

Thursday, March 25, 7:00-8:30 PM

Speakers:

- Cahal Stephens AIA, Architect, former President and CEO of Einhorn Yaffee Prescott, Architecture and Engineering PC

- Todd Holland, Five College Energy Manager
- Tom Davies AIA, Director of Design and Construction, Amherst College
- Robert Aumer, architect with Bohlin Cywinski Jackson, Pittsburgh PA

### Sustainable Landscapes: The Greening of our Suburban and Urban Spaces

Thursday, April 15, 7:00-8:30 PM

Speakers:

- Kim Erslev, Faculty, Conway School of Landscape Architecture
- Patricia McGirr, Assist. Prof. of Landscape Architecture, Dept. of Landscape Architecture and Regional Planning, UMass Amherst
- Erica Rioux Gees AIA, Associate, Kuhn Riddle Architects

### Regenerative Design in the Public Realm

Wednesday, May 5th, 3:30-5:00 PM

- Speaker: Michael Singer, Artist

## NESEA

### BuildingEnergy10

Reduce, Retrofit, and Renew

March 9-11

Seaport World Trade Center, Boston

Generating truly new ideas in the world of sustainability requires whole systems thinking, a cross-disciplinary approach, and rigorous standards for content and case studies. Conference sessions range from emerging trends in renewable energy to deep energy retrofits of commercial and residential buildings. The Building Energy Trade Show features 160 exhibitors showcasing the latest sustainable technologies and products.

Go to <http://www.nesea.org/buildingenergy/registrationinformation/> for more info and to register. Early Bird discount is available until February 8.

effective  
award-winning  
elegant  
colorful

mica  
blue  
CREATIVE

websites / logos / brochures  
architectural photography  
text / copy writing  
qualifications / proposal packages  
awards program packages  
marketing plans

*clients include:*

Head Start  
Margo Jones, Architects  
C.J. Lawler Associates, Architects  
Lukas Design Interiors  
Paintbox Theatre  
Berkshire Hematology Oncology  
J.P. Engineering

Julie Waggoner  
(413) 665-2280  
jwaggoner@micablue.com

# WMAIA PROGRAMS

## Upcoming Programs for Spring 2010

(LUs pending)

Wednesday, January 20  
4:00 -6:00 PM

### Tour of Ford Hall Engineering Building at Smith College

(Bohlin Cywinski Jackson, architect)

Tour Ford Hall, the new 140,000-square-foot science and engineering building that incorporates numerous initiatives in its design and use in order to reduce the consumption of energy resources and the costs of operation and to serve as a teaching tool for sustainable design. Program led by John Robinson AIA, Manager Capital Projects, Smith College.

### Greening the Valley Lecture Series:

WMAIA is happy to be able to offer LU's for the following public lectures in association with the UMass Amherst University Gallery exhibit. See Page 13 for a full description of the lectures.

Thursday, February 25  
**Sustainability in the  
Community**

Thursday, March 11  
**Old New and Available for All**

Thursday, March 25  
**Sustainable Campuses**

Thursday, April 15  
**Sustainable Landscapes**

Wednesday, May 5th  
**Regenerative Design in the  
Public Realm**

If you have a suggestion for a WMAIA program - a building you'd like us to tour or a professional development topic you'd like us to cover - please email Lorin Starr, WMAIA Executive/ Program Director at [director@wmaia.org](mailto:director@wmaia.org) or call 413-665-2424.

And don't forget to check [www.wmaia.org](http://www.wmaia.org) for program information.

**WMAIA** news

40 Hulst Road  
Amherst, MA 01002

